

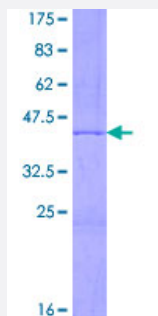
Full-Length

HIST2H3A (Human) Recombinant Protein (P01)

Catalog # H00333932-P01

Size 25 ug, 10 ug

Applications



Specification

Product Description	Human HIST2H3A full-length ORF (NP_001005464.1, 1 a.a. - 136 a.a.) recombinant protein with GS T-tag at N-terminal.
Sequence	MARTKQTARKSTGGKAPRKQLATKAARKSAPATGGVKKPHRYRPGTVALREIRRYQKSTELLIRKL PFQRLVREIAQDFKTDLRFQSSAVMALQEASEAYLVGLFEDTNLCAIHAKRVTIMPKDIQLARRIRG ERA
Host	Wheat Germ (in vitro)
Theoretical MW (kDa)	41.8
Preparation Method	in vitro wheat germ expression system
Purification	Glutathione Sepharose 4 Fast Flow
Quality Control Testing	12.5% SDS-PAGE Stained with Coomassie Blue.
Storage Buffer	50 mM Tris-HCl, 10 mM reduced Glutathione, pH=8.0 in the elution buffer.
Storage Instruction	Store at -80°C. Aliquot to avoid repeated freezing and thawing.
Note	Best use within three months from the date of receipt of this protein.

Applications

- Enzyme-linked Immunoabsorbent Assay
- Western Blot (Recombinant protein)
- Antibody Production
- Protein Array

Gene Info — HIST2H3A

Entrez GeneID [333932](#)

GeneBank Accession# [NM_001005464.2](#)

Protein Accession# [NP_001005464.1](#)

Gene Name HIST2H3A

Gene Alias H3/n, H3/o

Gene Description histone cluster 2, H3a

Gene Ontology [Hyperlink](#)

Gene Summary Histones are basic nuclear proteins that are responsible for the nucleosome structure of the chromosomal fiber in eukaryotes. This structure consists of approximately 146 bp of DNA wrapped around a nucleosome, an octamer composed of pairs of each of the four core histones (H2A, H2B, H3, and H4). The chromatin fiber is further compacted through the interaction of a linker histone, H1, with the DNA between the nucleosomes to form higher order chromatin structures. This gene is intronless and encodes a member of the histone H3 family. Transcripts from this gene lack polyA tails; instead, they contain a palindromic termination element. This gene is found in a histone cluster on chromosome 1. This gene is one of four histone genes in the cluster that are duplicated; this record represents the centromeric copy. [provided by RefSeq]

Other Designations histone 2, H3a|histone H3/o

Pathway

- [Systemic lupus erythematosus](#)