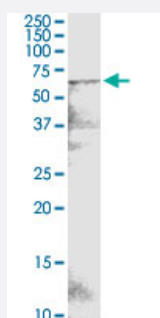


# POTED monoclonal antibody (M05), clone 6D9

Catalog # H00317754-M05

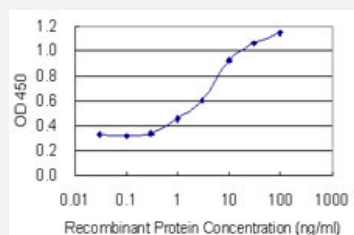
Size 100 ug

## Applications



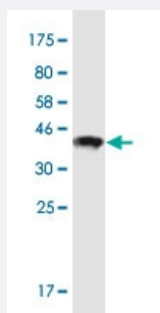
### Western Blot (Cell lysate)

POTED monoclonal antibody (M05), clone 6D9. Western Blot analysis of POTED expression in HepG2.



### Sandwich ELISA (Recombinant protein)

Detection limit for recombinant GST tagged POTED is 0.3 ng/ml as a capture antibody.



Western Blot detection against Immunogen (36.74 KDa) .

## Specification

### Product Description

Mouse monoclonal antibody raised against a partial recombinant POTED.

Immunogen	POTED (NP_778146.1, 485 a.a. ~ 584 a.a) partial recombinant protein with GST tag. MW of the GST tag alone is 26 KDa.
Sequence	NTGISQDEILTNKQKQIEVAEQKMNSELSLSHKKEEDLLRENSVLQEEIAVLRLELDETKHQNQLRE NKILEEIESVKEKTDKLLRAMQLNEEALTKTNI
Host	Mouse
Reactivity	Human
Isotype	IgG2b Kappa
Quality Control Testing	Antibody Reactive Against Recombinant Protein. Western Blot detection against Immunogen (36.74 KDa) .
Storage Buffer	In 1x PBS, pH 7.4
Storage Instruction	Store at -20°C or lower. Aliquot to avoid repeated freezing and thawing.

## Applications

- Western Blot (Cell lysate)

POTED monoclonal antibody (M05), clone 6D9. Western Blot analysis of POTED expression in HepG2.

[Protocol Download](#)

- Western Blot (Recombinant protein)

[Protocol Download](#)

- Sandwich ELISA (Recombinant protein)

Detection limit for recombinant GST tagged POTED is 0.3 ng/ml as a capture antibody.

[Protocol Download](#)

- ELISA

## Gene Info — POTED

Entrez GeneID	<a href="#">317754</a>
GeneBank Accession#	<a href="#">NM_174981</a>
Protein Accession#	<a href="#">NP_778146.1</a>

Gene Name	POTED
Gene Alias	A26B3, ANKRD21, POTE, POTE-21, POTE21
Gene Description	POTE ankyrin domain family, member D
Omim ID	<a href="#">607549</a>
Gene Ontology	<a href="#">Hyperlink</a>
Gene Summary	O
Other Designations	ANKRD26-like family B, member 3 Expressed in prostate, ovary, testis, and placenta ankyrin repeat domain 21 pote protein