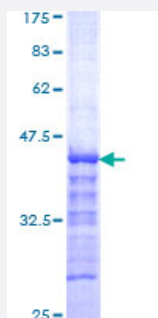


# SALF (Human) Recombinant Protein (Q01)

Catalog # H00286749-Q01

Size 25 ug, 10 ug

## Applications



## Specification

<b>Product Description</b>	Human SALF partial ORF ( NP_758515, 141 a.a. - 249 a.a.) recombinant protein with GST-tag at N-terminal.
<b>Sequence</b>	SCTHPTPKVGLPDEVNPQQAESLGFQSDDLPPQFYFREDCAFSSPFWKDEGSDSHFTLDPPG SKKMFSSRNKEMPIDQKSLNKCSLNYICEKLEHLQSAENQDSLRSLS
<b>Host</b>	Wheat Germ (in vitro)
<b>Theoretical MW (kDa)</b>	37.73
<b>Preparation Method</b>	<a href="#">in vitro wheat germ expression system</a>
<b>Purification</b>	Glutathione Sepharose 4 Fast Flow
<b>Quality Control Testing</b>	12.5% SDS-PAGE Stained with Coomassie Blue.
<b>Storage Buffer</b>	50 mM Tris-HCl, 10 mM reduced Glutathione, pH=8.0 in the elution buffer.
<b>Storage Instruction</b>	Store at -80°C. Aliquot to avoid repeated freezing and thawing.
<b>Note</b>	Best use within three months from the date of receipt of this protein.

## Applications

- Enzyme-linked Immunoabsorbent Assay
- Western Blot (Recombinant protein)
- Antibody Production
- Protein Array

## Gene Info — STON1-GTF2A1L

**Entrez GeneID** [286749](#)

**GeneBank Accession#** [NM\\_172311](#)

**Protein Accession#** [NP\\_758515](#)

**Gene Name** STON1-GTF2A1L

**Gene Alias** MGC126821, MGC126823, SALF

**Gene Description** STON1-GTF2A1L readthrough transcript

**Gene Ontology** [Hyperlink](#)

**Gene Summary** The STON1-GTF2A1L mRNA is an infrequent but naturally occurring co-transcribed product of the neighboring STON1 and GTF2A1L genes. This rare transcript encodes a fusion protein composed of greater than 95% each of the individual elements, stonin 1 and general transcription factor IIA, 1-like. The significance of this co-transcribed mRNA and the function of its protein product have not yet been determined. [provided by RefSeq]

**Other Designations** OTTHUMP00000159452|STON1-GTF2A1L protein|stoned B/TFIIA alpha/beta like factor|stoned B/TFIIA-alpha/beta-like factor