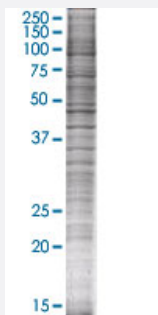


P2RY8 293T Cell Transient Overexpression Lysate(Denatured)

Catalog # H00286530-T05

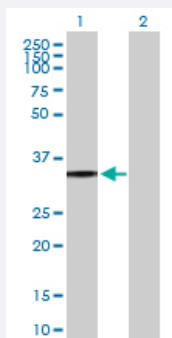
Size 100 uL

Applications



SDS-PAGE Gel

P2RY8 transfected lysate.



Western Blot

Lane 1: P2RY8 transfected lysate (40.6 KDa)

Lane 2: Non-transfected lysate.

Specification

Transfected Cell Line 293T

Plasmid pV5-P2RY8 full-length

Host Human

Theoretical MW (kDa) 40.6

Quality Control Testing Transient overexpression cell lysate was tested with Anti-P2RY8 antibody ([H00286530-B02P](#)) by Western Blots.

SDS-PAGE Gel
P2RY8 transfected lysate.

Western Blot
Lane 1: P2RY8 transfected lysate (40.6 KDa)
Lane 2: Non-transfected lysate.

Storage Buffer	1X Sample Buffer (50 mM Tris-HCl, 2% SDS, 10% glycerol, 300 mM 2-mercaptoethanol, 0.01% Bromophenol blue)
Storage Instruction	Store at -80°C. Aliquot to avoid repeated freezing and thawing.

Applications

- Western Blot

Gene Info — P2RY8

Entrez GeneID	286530
GeneBank Accession#	NM_178129
Protein Accession#	NP_835230
Gene Name	P2RY8
Gene Alias	MGC50878, P2Y8
Gene Description	purinergic receptor P2Y, G-protein coupled, 8
Omim ID	300525
Gene Ontology	Hyperlink
Gene Summary	The protein encoded by this gene belongs to the family of G-protein coupled receptors, that are preferentially activated by adenosine and uridine nucleotides. This gene is moderately expressed in undifferentiated HL60 cells, and is located on both chromosomes X and Y. [provided by RefSeq]
Other Designations	G-protein coupled purinergic receptor P2Y8 OTTHUMP00000022830

Pathway

- [Neuroactive ligand-receptor interaction](#)