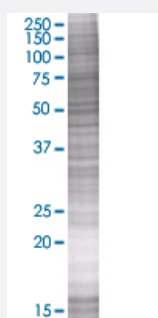


# P2RY8 293T Cell Transient Overexpression Lysate(Denatured)

Catalog # H00286530-T01

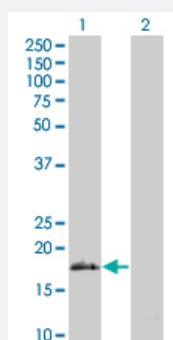
Size 100 uL

## Applications



### SDS-PAGE Gel

P2RY8 transfected lysate.



### Western Blot

Lane 1: P2RY8 transfected lysate ( 40.6 KDa)

Lane 2: Non-transfected lysate.

## Specification

**Transfected Cell Line** 293T

**Plasmid** pCMV-P2RY8 full-length

**Host** Human

**Theoretical MW (kDa)** 39.6

**Quality Control Testing** Transient overexpression cell lysate was tested with Anti-P2RY8 antibody ([H00286530-B02](#)) by Western Blots.  
SDS-PAGE Gel  
P2RY8 transfected lysate.  
Western Blot  
Lane 1: P2RY8 transfected lysate ( 40.6 KDa)  
Lane 2: Non-transfected lysate.

Storage Buffer	1X Sample Buffer (50 mM Tris-HCl, 2% SDS, 10% glycerol, 300 mM 2-mercaptoethanol, 0.01% Bromophenol blue)
Storage Instruction	Store at -80°C. Aliquot to avoid repeated freezing and thawing.

## Applications

- Western Blot

## Gene Info — P2RY8

Entrez GeneID	<a href="#">286530</a>
GeneBank Accession#	<a href="#">NM_178129</a>
Protein Accession#	<a href="#">NP_835230</a>
Gene Name	P2RY8
Gene Alias	MGC50878, P2Y8
Gene Description	purinergic receptor P2Y, G-protein coupled, 8
Omim ID	<a href="#">300525</a>
Gene Ontology	<a href="#">Hyperlink</a>
Gene Summary	The protein encoded by this gene belongs to the family of G-protein coupled receptors, that are preferentially activated by adenosine and uridine nucleotides. This gene is moderately expressed in undifferentiated HL60 cells, and is located on both chromosomes X and Y. [provided by RefSeq]
Other Designations	G-protein coupled purinergic receptor P2Y8 OTTHUMP00000022830

## Pathway

- [Neuroactive ligand-receptor interaction](#)