

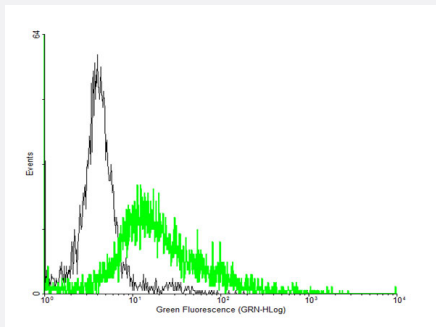
MaxPab®

P2RY8 purified MaxPab mouse polyclonal antibody (B02P)

Catalog # H00286530-B02P

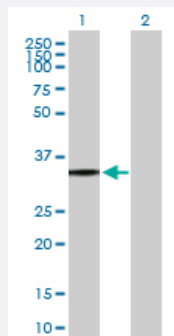
Size 50 ug

Applications



Flow Cytometry

FACS analysis of negative control 293 cells (Black) and P2RY8 expressing 293 cells (Green) using P2RY8 purified MaxPab mouse polyclonal antibody.



Western Blot (Transfected lysate)

Western Blot analysis of P2RY8 expression in transfected 293T cell line ([H00286530-T05](#)) by P2RY8 MaxPab polyclonal antibody.

Lane 1: P2RY8 transfected lysate(39.49 KDa).

Lane 2: Non-transfected lysate.

Specification

Product Description

Mouse polyclonal antibody raised against a full-length human P2RY8 protein.

Immunogen

P2RY8 (NP_835230, 1 a.a. ~ 359 a.a) full-length human protein.

Sequence

MQVPNSTGPDNATLQMLRNPAIAVALPVVYSLVAAVSIPGNLFSWLWLCRRMGPRSPSVIFMINLS
VTDMLASVLPFQYYHCNRHHWVFGVLLCNVVTVAFYANMYSSILTMTCISVERFLGVLYPLSSKR
WRRRRYAVAACAGTWLLLLTALSPLARTDLTYPVHALGIITCFDVLKWTMLPSVAMWAVFLFTIFIL
LFLIPFVITVACYTATILKLLRTEEAHGREQRRRAVGLAAVVLLAFVTCFAPNNFVLLAHIVSRLFYGK
SYHHVYKLTCLSLNCLDPFVYFASREFQLRLREYLGRRVPRDLDTRRESLFSARTTSVRS
EAGAHPEGMEGATRPGLRQESVF

Host

Mouse

Reactivity	Human
Quality Control Testing	Antibody reactive against mammalian transfected lysate.
Storage Buffer	In 1x PBS, pH 7.4
Storage Instruction	Store at -20°C or lower. Aliquot to avoid repeated freezing and thawing.

Applications

- Flow Cytometry

FACS analysis of negative control 293 cells (Black) and P2RY8 expressing 293 cells (Green) using P2RY8 purified MaxPab mouse polyclonal antibody.

- Western Blot (Transfected lysate)

Western Blot analysis of P2RY8 expression in transfected 293T cell line ([H00286530-T05](#)) by P2RY8 MaxPab polyclonal antibody.

Lane 1: P2RY8 transfected lysate(39.49 KDa).

Lane 2: Non-transfected lysate.

[Protocol Download](#)

Gene Info — P2RY8

Entrez GeneID	286530
GeneBank Accession#	NM_178129
Protein Accession#	NP_835230
Gene Name	P2RY8
Gene Alias	MGC50878, P2Y8
Gene Description	purinergic receptor P2Y, G-protein coupled, 8
Omim ID	300525
Gene Ontology	Hyperlink
Gene Summary	The protein encoded by this gene belongs to the family of G-protein coupled receptors, that are preferentially activated by adenosine and uridine nucleotides. This gene is moderately expressed in undifferentiated HL60 cells, and is located on both chromosomes X and Y. [provided by RefSeq]
Other Designations	G-protein coupled purinergic receptor P2Y8 OTTHUMP00000022830

Pathway

- [Neuroactive ligand-receptor interaction](#)