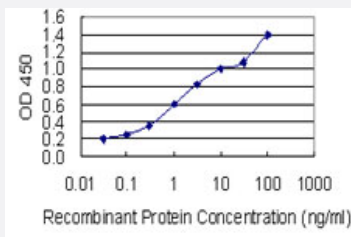


FBXO43 monoclonal antibody (M04), clone 4B6

Catalog # H00286151-M04

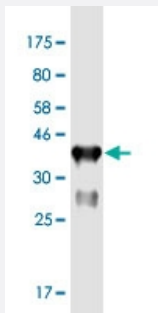
Size 100 ug

Applications



Sandwich ELISA (Recombinant protein)

Detection limit for recombinant GST tagged FBXO43 is 0.03 ng/ml as a capture antibody.



Western Blot detection against Immunogen (37.84 KDa) .

Specification

Product Description

Mouse monoclonal antibody raised against a partial recombinant FBXO43.

Immunogen

FBXO43 (XP_209918, 1 a.a. ~ 110 a.a) partial recombinant protein with GST tag. MW of the GST tag alone is 26 KDa.

Sequence

MSQRHSGQAGTEAGNGADSPPIVNSKYSTRDFCSTSSFQDSGYNELKSCSFDNIDKEYLGKKE
KGPTLLYEHPEPESGLGLTHPLESPTQKKKCILPRKEKDKTPELCET

Host

Mouse

Reactivity

Human

Isotype

IgG2a Kappa

Quality Control Testing

Antibody Reactive Against Recombinant Protein.
Western Blot detection against Immunogen (37.84 KDa) .

Storage Buffer

In 1x PBS, pH 7.4

Storage Instruction

Store at -20°C or lower. Aliquot to avoid repeated freezing and thawing.

Applications

- Western Blot (Recombinant protein)

[Protocol Download](#)

- Sandwich ELISA (Recombinant protein)

Detection limit for recombinant GST tagged FBXO43 is 0.03 ng/ml as a capture antibody.

[Protocol Download](#)

- ELISA

Gene Info — FBXO43

Entrez GeneID

[286151](#)

GeneBank Accession#

[XM_209918](#)

Protein Accession#

[XP_209918](#)

Gene Name

FBXO43

Gene Alias

EMI2, ERP1, Fbx43

Gene Description

F-box protein 43

Omim ID

[609110](#)

Gene Ontology

[Hyperlink](#)

Gene Summary

Members of the F-box protein family, such as FBXO43, are characterized by an approximately 40 -amino acid F-box motif. SCF complexes, formed by SKP1 (MIM 601434), cullin (see CUL1; MIM 603134), and F-box proteins, act as protein-ubiquitin ligases. F-box proteins interact with SKP1 through the F box, and they interact with ubiquitination targets through other protein interaction domains (Jin et al., 2004 [PubMed 15520277]).[supplied by OMIM]

Other Designations

early mitotic inhibitor 2