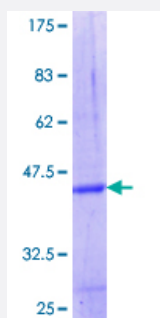


FBXW12 (Human) Recombinant Protein (Q01)

Catalog # H00285231-Q01

Size 10 ug, 25 ug

Applications



Specification

Product Description	Human FBXW12 partial ORF (NP_996985.1, 265 a.a. - 354 a.a.) recombinant protein with GST-tag at N-terminal.
Sequence	LLRPSEGSDPLSTFLPHKLCASACWTPKVKNRITLMSQSSTGKKTEFITFDLTTKKTGGQTVIQAYE IASFQVAAHLKCPWMGASDGYM
Host	Wheat Germ (in vitro)
Theoretical MW (kDa)	35.64
Preparation Method	in vitro wheat germ expression system
Purification	Glutathione Sepharose 4 Fast Flow
Quality Control Testing	12.5% SDS-PAGE Stained with Coomassie Blue.
Storage Buffer	50 mM Tris-HCl, 10 mM reduced Glutathione, pH=8.0 in the elution buffer.
Storage Instruction	Store at -80°C. Aliquot to avoid repeated freezing and thawing.
Note	Best use within three months from the date of receipt of this protein.

Applications

- Enzyme-linked Immunoabsorbent Assay
- Western Blot (Recombinant protein)
- Antibody Production
- Protein Array

Gene Info — FBXW12

Entrez GeneID	285231
GeneBank Accession#	NM_207102
Protein Accession#	NP_996985.1
Gene Name	FBXW12
Gene Alias	FBXO12, FBXO35, Fbw12, MGC120385, MGC120386, MGC120387
Gene Description	F-box and WD repeat domain containing 12
Omim ID	609075
Gene Ontology	Hyperlink
Gene Summary	Members of the F-box protein family, such as FBXW12, are characterized by an approximately 40-amino acid F-box motif. SCF complexes, formed by SKP1 (MIM 601434), cullin (see CUL1; MIM 603034), and F-box proteins, act as protein-ubiquitin ligases. F-box proteins interact with SKP1 through the F box, and they interact with ubiquitination targets through other protein interaction domains (Jin et al., 2004 [PubMed 15520277]).[supplied by OMIM]
Other Designations	F-box and WD-40 domain protein 12 F-box only protein 35 F-box- and WD40-repeat-containing protein OTTHUMP00000164809