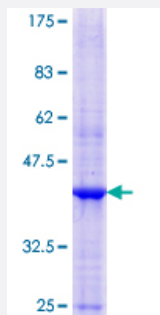


# NOMO2 (Human) Recombinant Protein (Q01)

Catalog # H00283820-Q01

Size 25 ug, 10 ug

## Applications



## Specification

<b>Product Description</b>	Human NOMO2 partial ORF ( NP_775885.1, 1040 a.a. - 1139 a.a.) recombinant protein with GST-tag at N-terminal.
<b>Sequence</b>	NNDIDDVNIVFRQINQFDLSGNVITSSEYLPTLWVKLYKSENLDNPIQTVSLGQSLFFHFPPLLRDG ENYVVLLDSTLPRSQYDYL PQVSFTAVGYHK
<b>Host</b>	Wheat Germ (in vitro)
<b>Theoretical MW (kDa)</b>	36.74
<b>Preparation Method</b>	<a href="#">in vitro wheat germ expression system</a>
<b>Purification</b>	Glutathione Sepharose 4 Fast Flow
<b>Quality Control Testing</b>	12.5% SDS-PAGE Stained with Coomassie Blue.
<b>Storage Buffer</b>	50 mM Tris-HCl, 10 mM reduced Glutathione, pH=8.0 in the elution buffer.
<b>Storage Instruction</b>	Store at -80°C. Aliquot to avoid repeated freezing and thawing.
<b>Note</b>	Best use within three months from the date of receipt of this protein.

## Applications

- Enzyme-linked Immunoabsorbent Assay
- Western Blot (Recombinant protein)
- Antibody Production
- Protein Array

## Gene Info — NOMO2

**Entrez GeneID** [283820](#)

**GeneBank Accession#** [NM\\_173614](#)

**Protein Accession#** [NP\\_775885.1](#)

**Gene Name** NOMO2

**Gene Alias** Nomo, PM5

**Gene Description** NODAL modulator 2

**Omim ID** [609158](#)

**Gene Ontology** [Hyperlink](#)

**Gene Summary** This gene encodes a protein originally thought to be related to the collagenase gene family. This gene is one of three highly similar genes in a region of duplication located on the p arm of chromosome 16. These three genes encode closely related proteins that may have the same function. The protein encoded by one of these genes has been identified as part of a protein complex that participates in the Nodal signaling pathway during vertebrate development. Mutations in ABCC6, which is located nearby, rather than mutations in this gene are associated with pseudoxanthoma elasticum (PXE). Two transcripts encoding different isoforms have been described. [provided by RefSeq]

**Other Designations** nodal modulator 2|pM5 protein, centromeric copy