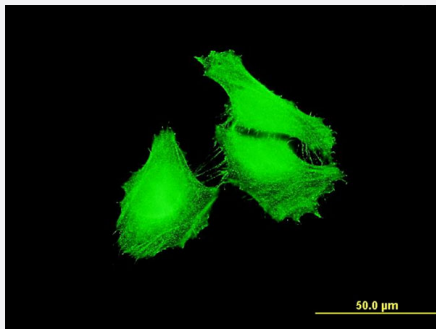


FBXL22 monoclonal antibody (M01), clone 1B6

Catalog # H00283807-M01

Size 50 ug

Applications



Immunofluorescence

Immunofluorescence of monoclonal antibody to FBXL22 on HeLa cell .
[antibody concentration 10 ug/ml]

Specification

Product Description	Mouse monoclonal antibody raised against a partial recombinant FBXL22.
Immunogen	FBXL22 (NP_976307, 1 a.a. ~ 110 a.a) partial recombinant protein with GST tag. MW of the GST tag alone is 26 KDa.
Sequence	MHITQLNRECLLHLFSFLDKDSRKSRLARTCSQLHDVFEDEPALWSLLHFRSLTELQKDNFLLGPAL RSLSCWHSSRVQVCSIEDWLKSAFQRSICSRHESLVNDFLLRVC
Host	Mouse
Reactivity	Human
Isotype	IgG2a Kappa
Quality Control Testing	Antibody Reactive Against Recombinant Protein.
Storage Buffer	In 1x PBS, pH 7.4
Storage Instruction	Store at -20°C or lower. Aliquot to avoid repeated freezing and thawing.

Applications

- ELISA
- Immunofluorescence

Immunofluorescence of monoclonal antibody to FBXL22 on HeLa cell . [antibody concentration 10 ug/ml]

Gene Info — FBXL22

Entrez GeneID	283807
GeneBank Accession#	NM_203373
Protein Accession#	NP_976307
Gene Name	FBXL22
Gene Alias	FLJ39626, Fbl22, MGC75496
Gene Description	F-box and leucine-rich repeat protein 22
Omim ID	609088
Gene Ontology	Hyperlink
Gene Summary	Members of the F-box protein family, such as FBXL22, are characterized by an approximately 40-amino acid F-box motif. SCF complexes, formed by SKP1 (MIM 601434), cullin (see CUL1; MIM 603134), and F-box proteins, act as protein-ubiquitin ligases. F-box proteins interact with SKP1 through the F box, and they interact with ubiquitination targets through other protein interaction domains (Jin et al., 2004 [PubMed 15520277]).[supplied by OMIM]
Other Designations	-

Disease

- [Tobacco Use Disorder](#)