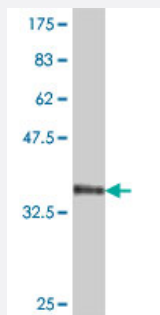


# FBXL22 polyclonal antibody (A01)

Catalog # H00283807-A01

Size 50 uL

## Applications



Western Blot detection against Immunogen (38.21 KDa) .

## Specification

<b>Product Description</b>	Mouse polyclonal antibody raised against a partial recombinant FBXL22.
<b>Immunogen</b>	FBXL22 (NP_976307, 1 a.a. ~ 110 a.a) partial recombinant protein with GST tag.
<b>Sequence</b>	MHITQLNRECLLHLFSFLDKDSRKSRLARTCSQLHDVFE DPALWSLLHFRSLTELQKDNFLLGPAL RSLSICWHSSRVQVCSIEDWLKSAFQRSICSRHESLVNDFLLRVC
<b>Host</b>	Mouse
<b>Reactivity</b>	Human
<b>Quality Control Testing</b>	Antibody Reactive Against Recombinant Protein. Western Blot detection against Immunogen (38.21 KDa) .
<b>Storage Buffer</b>	50 % glycerol
<b>Storage Instruction</b>	Store at -20°C or lower. Aliquot to avoid repeated freezing and thawing.

## Applications

- Western Blot (Recombinant protein)

[Protocol Download](#)

- ELISA

## Gene Info — FBXL22

Entrez GeneID [283807](#)

GeneBank Accession# [NM\\_203373](#)

Protein Accession# [NP\\_976307](#)

Gene Name FBXL22

Gene Alias FLJ39626, Fbl22, MGC75496

Gene Description F-box and leucine-rich repeat protein 22

Omim ID [609088](#)

Gene Ontology [Hyperlink](#)

**Gene Summary** Members of the F-box protein family, such as FBXL22, are characterized by an approximately 40-amino acid F-box motif. SCF complexes, formed by SKP1 (MIM 601434), cullin (see CUL1; MIM 603134), and F-box proteins, act as protein-ubiquitin ligases. F-box proteins interact with SKP1 through the F box, and they interact with ubiquitination targets through other protein interaction domains (Jin et al., 2004 [PubMed 15520277]).[supplied by OMIM]

Other Designations -

## Disease

- [Tobacco Use Disorder](#)