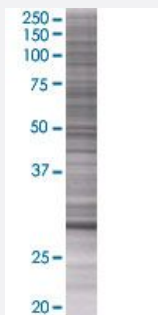


# KCNRG 293T Cell Transient Overexpression Lysate(Denatured)

Catalog # H00283518-T01

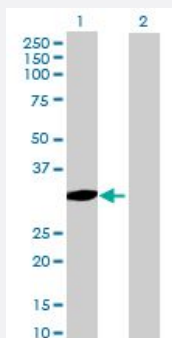
Size 100 uL

## Applications



### SDS-PAGE Gel

KCNRG transfected lysate.



### Western Blot

Lane 1: KCNRG transfected lysate ( 30.03 KDa)

Lane 2: Non-transfected lysate.

## Specification

**Transfected Cell Line** 293T

**Plasmid** pCMV-KCNRG full-length

**Host** Human

**Theoretical MW (kDa)** 30.03

**Quality Control Testing** Transient overexpression cell lysate was tested with Anti-KCNRG antibody ([H00283518-B01](#)) by Western Blots.  
SDS-PAGE Gel  
KCNRG transfected lysate.  
Western Blot  
Lane 1: KCNRG transfected lysate ( 30.03 KDa)  
Lane 2: Non-transfected lysate.

|                            |   |
|----------------------------|---|
| <b>Storage Buffer</b>      | 1X Sample Buffer (50 mM Tris-HCl, 2% SDS, 10% glycerol, 300 mM 2-mercaptoethanol, 0.01% Bromophenol blue) |
| <b>Storage Instruction</b> | Store at -80°C. Aliquot to avoid repeated freezing and thawing.   |

## Applications

- Western Blot

## Gene Info — KCNRG

|                            |  |
|----------------------------|--|
| <b>Entrez GeneID</b>       | <a href="#">283518</a>   |
| <b>GeneBank Accession#</b> | <a href="#">NM_173605</a>  |
| <b>Protein Accession#</b>  | <a href="#">NP_775876</a>  |
| <b>Gene Name</b>           | KCNRG  |
| <b>Gene Alias</b>          | DLTET  |
| <b>Gene Description</b>    | potassium channel regulator  |
| <b>Omim ID</b>             | <a href="#">607947</a>   |
| <b>Gene Ontology</b>       | <a href="#">Hyperlink</a>  |
| <b>Gene Summary</b>        | KCNRG is a soluble protein with characteristics suggesting it forms heterotetramers with voltage-gated K(+) channels (see MIM 176260) and inhibits their function (Ivanov et al., 2003 [PubMed 12650944]).[supplied by OMIM] |
| <b>Other Designations</b>  | OTTHUMP00000178641   |