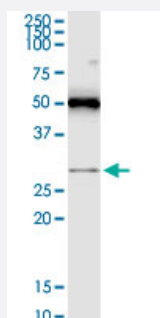


RASSF3 monoclonal antibody (M15), clone 3A5

Catalog # H00283349-M15

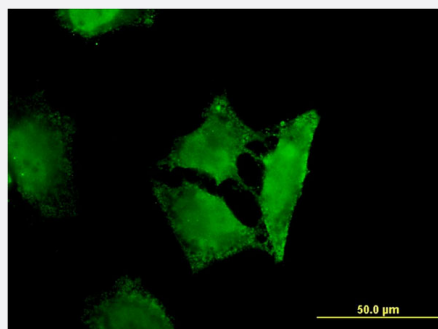
Size 100 ug

Applications



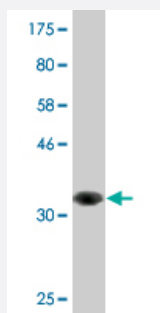
Western Blot (Tissue lysate)

RASSF3 monoclonal antibody (M15), clone 3A5. Western Blot analysis of RASSF3 expression in human placenta.



Immunofluorescence

Immunofluorescence of monoclonal antibody to RASSF3 on HeLa cell .
[antibody concentration 10 ug/ml]



Western Blot detection against Immunogen (34.98 kDa) .

Specification

Product Description

Mouse monoclonal antibody raised against a partial recombinant RASSF3.

Immunogen	RASSF3 (NP_835463.1, 29 a.a. ~ 112 a.a) partial recombinant protein with GST tag. MW of the GST tag alone is 26 KDa.
Sequence	QGKPRSGQQDVEKEKETHSYLSKEEIKEKVHKYNLAVTDKLMKMTLNSNGIYTGFIKVQMELCCKPPQTSPNSGKLSPPSSNGCMNT
Host	Mouse
Reactivity	Human
Isotype	IgG1 Kappa
Quality Control Testing	Antibody Reactive Against Recombinant Protein. Western Blot detection against Immunogen (34.98 KDa) .
Storage Buffer	In 1x PBS, pH 7.4
Storage Instruction	Store at -20°C or lower. Aliquot to avoid repeated freezing and thawing.

Applications

- Western Blot (Tissue lysate)

RASSF3 monoclonal antibody (M15), clone 3A5. Western Blot analysis of RASSF3 expression in human placenta.

[Protocol Download](#)

- Western Blot (Recombinant protein)

[Protocol Download](#)

- ELISA

- Immunofluorescence

Immunofluorescence of monoclonal antibody to RASSF3 on HeLa cell . [antibody concentration 10 ug/ml]

Gene Info — RASSF3

Entrez GeneID	283349
GeneBank Accession#	NM_178169
Protein Accession#	NP_835463.1
Gene Name	RASSF3

Gene Alias	MGC119194, MGC119195, MGC119197, RASSF5
Gene Description	Ras association (RalGDS/AF-6) domain family member 3
Omim ID	607019
Gene Ontology	Hyperlink
Gene Summary	The RAS oncogene (MIM 190020) is mutated in nearly one-third of all human cancers. Members of the RAS superfamily are plasma membrane GTP-binding proteins that modulate intracellular signal transduction pathways. A subfamily of RAS effectors, including RASSF3, share a RAS association (RA) domain.[supplied by OMIM]
Other Designations	Ras association (RalGDS/AF-6) domain family 3