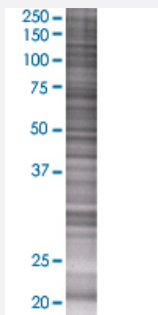


GCET2 293T Cell Transient Overexpression Lysate(Denatured)

Catalog # H00257144-T01

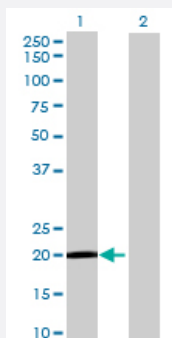
Size 100 uL

Applications



SDS-PAGE Gel

GCET2 transfected lysate.



Western Blot

Lane 1: GCET2 transfected lysate (19.69 KDa)

Lane 2: Non-transfected lysate.

Specification

Transfected Cell Line 293T

Plasmid pCMV-GCET2 full-length

Host Human

Theoretical MW (kDa) 19.69

Quality Control Testing Transient overexpression cell lysate was tested with Anti-GCET2 antibody ([H00257144-B01](#)) by Western Blots.
SDS-PAGE Gel
GCET2 transfected lysate.
Western Blot
Lane 1: GCET2 transfected lysate (19.69 KDa)
Lane 2: Non-transfected lysate.

Storage Buffer

1X Sample Buffer (50 mM Tris-HCl, 2% SDS, 10% glycerol, 300 mM 2-mercaptoethanol, 0.01% Bromophenol blue)

Storage Instruction

Store at -80°C. Aliquot to avoid repeated freezing and thawing.

Applications

- Western Blot

Gene Info — GCET2

Entrez GeneID[257144](#)**GeneBank Accession#**[NM_152785.3](#)**Protein Accession#**[NP_689998.1](#)**Gene Name**

GCET2

Gene Alias

GCAT2, HGAL, MGC40441

Gene Description

germinal center expressed transcript 2

Omim ID[607792](#)**Gene Ontology**[Hyperlink](#)**Gene Summary**

This gene encodes a protein which may function in signal transduction pathways and whose expression is elevated in germinal cell lymphomas. It contains a putative PDZ-interacting domain, an immunoreceptor tyrosine-based activation motif (ITAM), and two putative SH2 binding sites. In B cells, its expression is specifically induced by interleukin-4. Alternative splicing results in multiple transcript variants encoding different isoforms. [provided by RefSeq]

Other Designations

germinal center B cell associated-protein 2|germinal center-associated lymphoma