

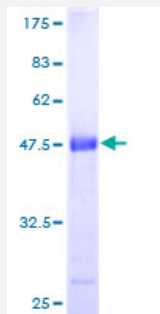
Full-Length

## GCET2 (Human) Recombinant Protein (P01)

Catalog # H00257144-P01

Size 25 ug, 10 ug

### Applications



### Specification

<b>Product Description</b>	Human GCET2 full-length ORF ( AAH30506, 1 a.a. - 178 a.a.) recombinant protein with GST-tag at N-terminal.
<b>Sequence</b>	MGNSLLRENRQNTQEMPWNVRMQSPKQRTSRCWDHHAEGCFCLPWKKILIFEKRQDSQNE NERMSSTPIQDNVDQTYSEELCYTLNHRVLCRTPSGNSAEEYYENVPCKAERPRESLGGTETEYS LLHMPSTDPRHARSPEDYEYELLMPHRISSHFLQQPRPLMAPSETQFSLH
<b>Host</b>	Wheat Germ (in vitro)
<b>Theoretical MW (kDa)</b>	45.32
<b>Preparation Method</b>	<a href="#">in vitro wheat germ expression system</a>
<b>Purification</b>	Glutathione Sepharose 4 Fast Flow
<b>Quality Control Testing</b>	12.5% SDS-PAGE Stained with Coomassie Blue.
<b>Storage Buffer</b>	50 mM Tris-HCl, 10 mM reduced Glutathione, pH=8.0 in the elution buffer.
<b>Storage Instruction</b>	Store at -80°C. Aliquot to avoid repeated freezing and thawing.
<b>Note</b>	Best use within three months from the date of receipt of this protein.

## Applications

- Enzyme-linked Immunoabsorbent Assay
- Western Blot (Recombinant protein)
- Antibody Production
- Protein Array

## Gene Info — GCET2

Entrez GeneID [257144](#)

GeneBank Accession# [BC030506](#)

Protein Accession# [AAH30506](#)

Gene Name GCET2

Gene Alias GCAT2, HGAL, MGC40441

Gene Description germinal center expressed transcript 2

Omim ID [607792](#)

Gene Ontology [Hyperlink](#)

**Gene Summary** This gene encodes a protein which may function in signal transduction pathways and whose expression is elevated in germinal cell lymphomas. It contains a putative PDZ-interacting domain, an immunoreceptor tyrosine-based activation motif (ITAM), and two putative SH2 binding sites. In B cells, its expression is specifically induced by interleukin-4. Alternative splicing results in multiple transcript variants encoding different isoforms. [provided by RefSeq]

**Other Designations** germinal center B cell associated-protein 2|germinal center-associated lymphoma