

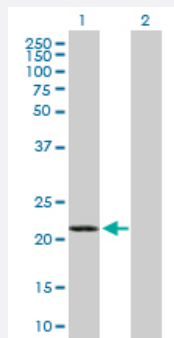
MaxPab®

## GCET2 purified MaxPab mouse polyclonal antibody (B01P)

Catalog # H00257144-B01P

Size 50 ug

### Applications



#### Western Blot (Transfected lysate)

Western Blot analysis of GCET2 expression in transfected 293T cell line ([H00257144-T01](#)) by GCET2 MaxPab polyclonal antibody.

Lane 1: GCET2 transfected lysate(19.58 KDa).

Lane 2: Non-transfected lysate.

### Specification

Product Description	Mouse polyclonal antibody raised against a full-length human GCET2 protein.
Immunogen	GCET2 (NP_689998.1, 1 a.a. ~ 178 a.a) full-length human protein.
Sequence	MGNSLLRENRRQQNTQEMPWNVRMQSPKQRTSRCWDHHAEGCFCLPWKKILIFEKRQDSQNE NERMSSTPIQDNVDQTYSEELCYTLINHRVLCRTPSGNSAEEYYENVPCKAERPRESLGGTETEYS LLHMPSTDPRHARSPEDHEYELLMPHRISSHFLQQPRPLMAPSETQFSHL
Host	Mouse
Reactivity	Human
Quality Control Testing	Antibody reactive against mammalian transfected lysate.
Storage Buffer	In 1x PBS, pH 7.4
Storage Instruction	Store at -20°C or lower. Aliquot to avoid repeated freezing and thawing.

### Applications

- Western Blot (Transfected lysate)

Western Blot analysis of GCET2 expression in transfected 293T cell line ([H00257144-T01](#)) by GCET2 MaxPab polyclonal antibody.

Lane 1: GCET2 transfected lysate(19.58 KDa).

Lane 2: Non-transfected lysate.

[Protocol Download](#)

## Gene Info — GCET2

Entrez GeneID [257144](#)

GeneBank Accession# [NM\\_152785.3](#)

Protein Accession# [NP\\_689998.1](#)

Gene Name GCET2

Gene Alias GCAT2, HGAL, MGC40441

Gene Description germinal center expressed transcript 2

Omim ID [607792](#)

Gene Ontology [Hyperlink](#)

**Gene Summary** This gene encodes a protein which may function in signal transduction pathways and whose expression is elevated in germinal cell lymphomas. It contains a putative PDZ-interacting domain, an immunoreceptor tyrosine-based activation motif (ITAM), and two putative SH2 binding sites. In B cells, its expression is specifically induced by interleukin-4. Alternative splicing results in multiple transcript variants encoding different isoforms. [provided by RefSeq]

**Other Designations** germinal center B cell associated-protein 2|germinal center-associated lymphoma