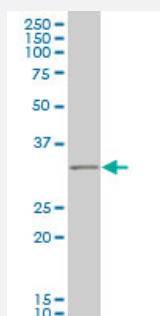


IBRDC2 monoclonal antibody (M02), clone 4F1

Catalog # H00255488-M02

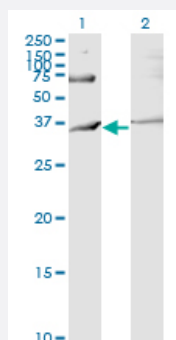
Size 100 ug

Applications



Western Blot (Cell lysate)

IBRDC2 monoclonal antibody (M02), clone 4F1 Western Blot analysis of IBRDC2 expression in IMR-32 (Cat # L008V1).

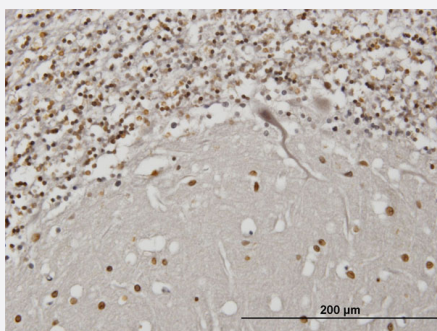


Western Blot (Transfected lysate)

Western Blot analysis of RNF144B expression in transfected 293T cell line by IBRDC2 monoclonal antibody (M02), clone 4F1.

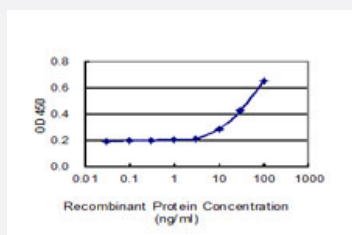
Lane 1: RNF144B transfected lysate(33.6 KDa).

Lane 2: Non-transfected lysate.



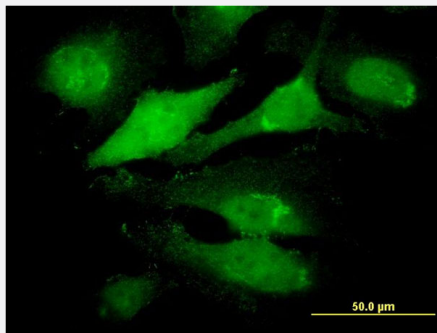
Immunohistochemistry (Formalin/PFA-fixed paraffin-embedded sections)

Immunoperoxidase of monoclonal antibody to IBRDC2 on formalin-fixed paraffin-embedded human cerebellum. [antibody concentration 1.2 ug/ml]



Sandwich ELISA (Recombinant protein)

Detection limit for recombinant GST tagged RNF144B is 3 ng/ml as a capture antibody.



Immunofluorescence

Immunofluorescence of monoclonal antibody to IBRDC2 on HeLa cell.
[antibody concentration 10 ug/ml]

Specification

Product Description	Mouse monoclonal antibody raised against a partial recombinant IBRDC2.
Immunogen	IBRDC2 (NP_877434, 1 a.a. ~ 100 a.a) partial recombinant protein with GST tag. MW of the GST tag alone is 26 KDa.
Sequence	MGSAGRLHYLAMTAENPTPGDLAPAPLITCKLCLCEQSLDKMTTLQECQCIFCTACKLQYMQLAIR EGCGSPITCPDMVCLNHGTLQEAEIACLPVDQF
Host	Mouse
Reactivity	Human
Isotype	IgG2a Kappa
Quality Control Testing	Antibody Reactive Against Recombinant Protein.
Storage Buffer	In 1x PBS, pH 7.4
Storage Instruction	Store at -20°C or lower. Aliquot to avoid repeated freezing and thawing.

Applications

- Western Blot (Cell lysate)

IBRDC2 monoclonal antibody (M02), clone 4F1 Western Blot analysis of IBRDC2 expression in IMR-32 (Cat # L008V1).

[Protocol Download](#)

- Western Blot (Transfected lysate)

Western Blot analysis of RNF144B expression in transfected 293T cell line by IBRDC2 monoclonal antibody (M02), clone 4F1.

Lane 1: RNF144B transfected lysate(33.6 KDa).

Lane 2: Non-transfected lysate.

[Protocol Download](#)

- Immunohistochemistry (Formalin/PFA-fixed paraffin-embedded sections)

Immunoperoxidase of monoclonal antibody to IBRDC2 on formalin-fixed paraffin-embedded human cerebellum. [antibody concentration 1.2 ug/ml]

[Protocol Download](#)

- Sandwich ELISA (Recombinant protein)

Detection limit for recombinant GST tagged RNF144B is 3 ng/ml as a capture antibody.

[Protocol Download](#)

- ELISA

- Immunofluorescence

Immunofluorescence of monoclonal antibody to IBRDC2 on HeLa cell. [antibody concentration 10 ug/ml]

Gene Info — RNF144B

Entrez GeneID [255488](#)

GeneBank Accession# [NM_182757](#)

Protein Accession# [NP_877434](#)

Gene Name RNF144B

Gene Alias IBRDC2, KIAA0161, MGC71786, bA528A10.3, p53RFP

Gene Description ring finger protein 144B

Gene Ontology [Hyperlink](#)

Other Designations IBR domain containing 2|OTTHUMP00000016079|OTTHUMP00000016080|OTTHUMP00000039360|p53-inducible RING finger protein|ring finger 144B

Disease

- [Tobacco Use Disorder](#)