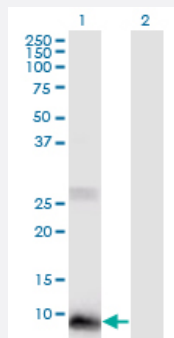


# POLR2J2 monoclonal antibody (M01), clone 1B2

Catalog # H00246721-M01

Size 100 ug

## Applications

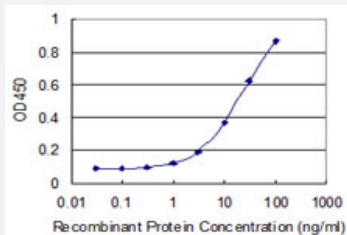


### Western Blot (Transfected lysate)

Western Blot analysis of POLR2J2 expression in transfected 293T cell line by POLR2J2 monoclonal antibody (M01), clone 1B2.

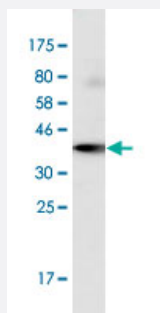
Lane 1: POLR2J2 transfected lysate (12.7 KDa).

Lane 2: Non-transfected lysate.



### Sandwich ELISA (Recombinant protein)

Detection limit for recombinant GST tagged POLR2J2 is 0.3 ng/ml as a capture antibody.



Western Blot detection against Immunogen (39.5 KDa).

## Specification

### Product Description

Mouse monoclonal antibody raised against a full-length recombinant POLR2J2.

<b>Immunogen</b>	POLR2J2 (NP_116581.3, 1 a.a. ~ 115 a.a) full-length recombinant protein with GST tag. MW of the GST tag alone is 26 KDa.
<b>Sequence</b>	MNAPPAFESFLLFEGEKITINKDTKVPKACLFINKEDHTLGNIIKSQLLKDPQVLFAGYKVPHPLEH KIIIRVQTTPDYSPQEAFNAITDLISELSLLEERFRTCLLPRLLP
<b>Host</b>	Mouse
<b>Reactivity</b>	Human
<b>Isotype</b>	IgG2a Kappa
<b>Quality Control Testing</b>	Antibody Reactive Against Recombinant Protein. Western Blot detection against Immunogen (39.5 KDa) .
<b>Storage Buffer</b>	In 1x PBS, pH 7.4
<b>Storage Instruction</b>	Store at -20°C or lower. Aliquot to avoid repeated freezing and thawing.

## Applications

- Western Blot (Transfected lysate)

Western Blot analysis of POLR2J2 expression in transfected 293T cell line by POLR2J2 monoclonal antibody (M01), clone 1B2.

Lane 1: POLR2J2 transfected lysate(12.7 KDa).

Lane 2: Non-transfected lysate.

[Protocol Download](#)

- Western Blot (Recombinant protein)

[Protocol Download](#)

- Sandwich ELISA (Recombinant protein)

Detection limit for recombinant GST tagged POLR2J2 is 0.3 ng/ml as a capture antibody.

[Protocol Download](#)

- ELISA

## Gene Info — POLR2J2

Entrez GeneID [246721](#)

GeneBank Accession# [NM\\_032959.3](#)

Protein Accession#	<a href="#">NP_116581.3</a>
Gene Name	POLR2J2
Gene Alias	HRPB11B, MGC105050, MGC54043, RPB11b1
Gene Description	polymerase (RNA) II (DNA directed) polypeptide J2
Omim ID	<a href="#">609881</a>
Gene Ontology	<a href="#">Hyperlink</a>
Gene Summary	<p>This gene is a member of the RNA polymerase II subunit 11 gene family, which includes three genes in a cluster on chromosome 7q22.1 and a pseudogene on chromosome 7p13. The founding member of this family, DNA directed RNA polymerase II polypeptide J, has been shown to encode a subunit of RNA polymerase II, the polymerase responsible for synthesizing messenger RNA in eukaryotes. This locus produces multiple, alternatively spliced transcripts that potentially express isoforms with distinct C-termini compared to DNA directed RNA polymerase II polypeptide J. Most or all variants are spliced to include additional non-coding exons at the 3' end which makes them candidates for nonsense-mediated decay (NMD). Consequently, it is not known if this locus expresses a protein or proteins in vivo. [provided by RefSeq]</p>
Other Designations	DNA directed RNA polymerase II polypeptide J-related

## Pathway

- [Metabolic pathways](#)
- [Purine metabolism](#)
- [Pyrimidine metabolism](#)
- [RNA polymerase](#)