

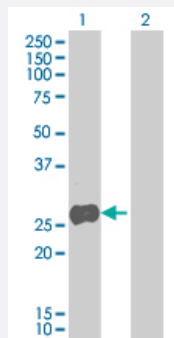
MaxPab®

MRPL21 MaxPab mouse polyclonal antibody (B01)

Catalog # H00219927-B01

Size 50 uL

Applications



Western Blot (Transfected lysate)

Western Blot analysis of MRPL21 expression in transfected 293T cell line ([H00219927-T01](#)) by MRPL21 MaxPab polyclonal antibody.

Lane 1: MRPL21 transfected lysate(23.1 KDa).

Lane 2: Non-transfected lysate.

Specification

| | |
|-------------------------|---|
| Product Description | Mouse polyclonal antibody raised against a full-length human MRPL21 protein. |
| Immunogen | MRPL21 (AAH55088, 1 a.a. ~ 209 a.a) full-length human protein. |
| Sequence | MAAAMAASSLTVTLGRLASACSHSILRPSGPGAASLWSASRRFNSQSTSYLPGYVPKTSLSPP WPEVVLDPDVEETRHHAEVVKKVNEMIVTGQYGRLFAVVHFASRQWKVTSEDLILIGNELDLACG ERIRLEKVLVVGADNFTLLGKPLLGLDLVRVEATVIEKTESWPRIIMRFRKRKNFKKKRVITPQTVL RINSIEIAPCLL |
| Host | Mouse |
| Reactivity | Human |
| Quality Control Testing | Antibody reactive against mammalian transfected lysate. |
| Storage Buffer | No additive |
| Storage Instruction | Store at -20°C or lower. Aliquot to avoid repeated freezing and thawing. |
| Note | For IHC and IF applications, antibody purification with Protein A will be needed prior to use. |

Applications

- Western Blot (Transfected lysate)

Western Blot analysis of MRPL21 expression in transfected 293T cell line ([H00219927-T01](#)) by MRPL21 MaxPab polyclonal antibody.

Lane 1: MRPL21 transfected lysate(23.1 KDa).

Lane 2: Non-transfected lysate.

[Protocol Download](#)

Gene Info — MRPL21

Entrez GeneID [219927](#)

GeneBank Accession# [BC055088](#)

Protein Accession# [AAH55088](#)

Gene Name MRPL21

Gene Alias L21mt, MGC62013, MRP-L21

Gene Description mitochondrial ribosomal protein L21

Gene Ontology [Hyperlink](#)

Gene Summary

Mammalian mitochondrial ribosomal proteins are encoded by nuclear genes and help in protein synthesis within the mitochondrion. Mitochondrial ribosomes (mitoribosomes) consist of a small 28 S subunit and a large 39S subunit. They have an estimated 75% protein to rRNA composition compared to prokaryotic ribosomes, where this ratio is reversed. Another difference between mammalian mitoribosomes and prokaryotic ribosomes is that the latter contain a 5S rRNA. Among different species, the proteins comprising the mitoribosome differ greatly in sequence, and sometimes in biochemical properties, which prevents easy recognition by sequence homology. This gene encodes a 39S subunit protein. Multiple transcript variants encoding different isoforms were identified through sequence analysis although some may be subject to nonsense-mediated decay (NMD). [provided by RefSeq]

Other Designations 39S ribosomal protein L21, mitochondrial