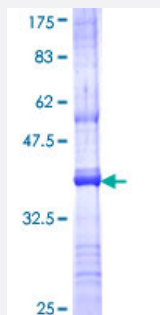


APOBEC3F (Human) Recombinant Protein (Q01)

Catalog # H00200316-Q01

Size 25 ug, 10 ug

Applications



Specification

Product Description	Human APOBEC3F partial ORF (NP_660341, 274 a.a. - 372 a.a.) recombinant protein with GST-tag at N-terminal.
Sequence	YTSWSPCPECAGEVAEFLARHSNVNLTIFTARLYYFWDTDYQEGRLRSLSQEGASVEIMGYKDFKY CWENFVYNDDEPFKPWKGLKYNFLFLDSKLQEIL
Host	Wheat Germ (in vitro)
Theoretical MW (kDa)	36.63
Preparation Method	in vitro wheat germ expression system
Purification	Glutathione Sepharose 4 Fast Flow
Quality Control Testing	12.5% SDS-PAGE Stained with Coomassie Blue.
Storage Buffer	50 mM Tris-HCl, 10 mM reduced Glutathione, pH=8.0 in the elution buffer.
Storage Instruction	Store at -80°C. Aliquot to avoid repeated freezing and thawing.
Note	Best use within three months from the date of receipt of this protein.

Applications

- Enzyme-linked Immunoabsorbent Assay
- Western Blot (Recombinant protein)
- Antibody Production
- Protein Array

Gene Info — APOBEC3F

Entrez GeneID [200316](#)

GeneBank Accession# [NM_145298](#)

Protein Accession# [NP_660341](#)

Gene Name APOBEC3F

Gene Alias ARP8, BK150C2.4.MRNA, KA6, MGC74891

Gene Description apolipoprotein B mRNA editing enzyme, catalytic polypeptide-like 3F

Omim ID [608993](#)

Gene Ontology [Hyperlink](#)

Gene Summary This gene is a member of the cytidine deaminase gene family. It is one of seven related genes or pseudogenes found in a cluster, thought to result from gene duplication, on chromosome 22. Members of the cluster encode proteins that are structurally and functionally related to the C to U RNA-editing cytidine deaminase APOBEC1. It is thought that the proteins may be RNA editing enzymes and have roles in growth or cell cycle control. Alternatively spliced transcript variants encoding different isoforms have been identified. [provided by RefSeq]

Other Designations induced upon T-cell activation

Pathway

- [Atrazine degradation](#)