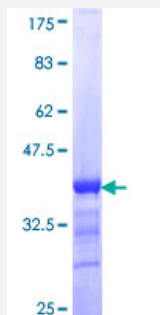


KRT24 (Human) Recombinant Protein (Q01)

Catalog # H00192666-Q01

Size 25 ug, 10 ug

Applications



Specification

Product Description	Human KRT24 partial ORF (NP_061889, 426 a.a. - 525 a.a.) recombinant protein with GST-tag at N-terminal.
Sequence	AEYKQLLDIKTRLEVEIETYRRLDGE GGGSSFAEFGGRNSGSVNMGSRDLVSGDSRSGSCSGQ GRDSSKTRVTKTMEELVDGKVVSSQVSSISEVKVK
Host	Wheat Germ (in vitro)
Theoretical MW (kDa)	36.52
Preparation Method	in vitro wheat germ expression system
Purification	Glutathione Sepharose 4 Fast Flow
Quality Control Testing	12.5% SDS-PAGE Stained with Coomassie Blue.
Storage Buffer	50 mM Tris-HCl, 10 mM reduced Glutathione, pH=8.0 in the elution buffer.
Storage Instruction	Store at -80°C. Aliquot to avoid repeated freezing and thawing.
Note	Best use within three months from the date of receipt of this protein.

Applications

- Enzyme-linked Immunoabsorbent Assay
- Western Blot (Recombinant protein)
- Antibody Production
- Protein Array

Gene Info — KRT24

Entrez GeneID [192666](#)

GeneBank Accession# [NM_019016](#)

Protein Accession# [NP_061889](#)

Gene Name KRT24

Gene Alias FLJ20261, MGC138169, MGC138173

Gene Description keratin 24

Omim ID [607742](#)

Gene Ontology [Hyperlink](#)

Gene Summary This gene encodes a member of the type I (acidic) keratin family, which belongs to the superfamily of intermediate filament (IF) proteins. Keratins are heteropolymeric structural proteins which form the intermediate filament. These filaments, along with actin microfilaments and microtubules, compose the cytoskeleton of epithelial cells. The type I keratin genes are clustered in a region of chromosome 17q12-q21. [provided by RefSeq]

Other Designations -