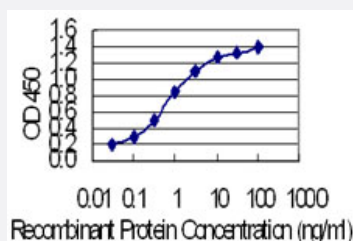


KRT24 monoclonal antibody (M01), clone 2D2

Catalog # H00192666-M01

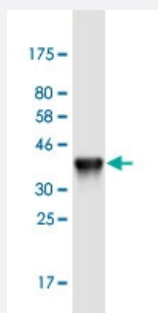
Size 100 ug

Applications



Sandwich ELISA (Recombinant protein)

Detection limit for recombinant GST tagged KRT24 is 0.03 ng/ml as a capture antibody.



Western Blot detection against Immunogen (36.52 KDa) .

Specification

Product Description	Mouse monoclonal antibody raised against a partial recombinant KRT24.
Immunogen	KRT24 (NP_061889, 426 a.a. ~ 525 a.a) partial recombinant protein with GST tag. MW of the GST tag alone is 26 KDa.
Sequence	AEYKQLLDIKTRLEVEIETYRRLLDGEGGGSSFAEFGGRNSGSVNMGSRDLVSGDSRSGSCSGQGRDSSKTRVTKTMEELVDGKVVSSQVSSISEVKVK
Host	Mouse
Reactivity	Human
Isotype	IgG2a Kappa

Quality Control Testing

Antibody Reactive Against Recombinant Protein.
Western Blot detection against Immunogen (36.52 KDa) .

Storage Buffer

In 1x PBS, pH 7.4

Storage Instruction

Store at -20°C or lower. Aliquot to avoid repeated freezing and thawing.

Applications

- Western Blot (Recombinant protein)

[Protocol Download](#)

- Sandwich ELISA (Recombinant protein)

Detection limit for recombinant GST tagged KRT24 is 0.03 ng/ml as a capture antibody.

[Protocol Download](#)

- ELISA

Gene Info — KRT24

Entrez GeneID

[192666](#)

GeneBank Accession#

[NM_019016](#)

Protein Accession#

[NP_061889](#)

Gene Name

KRT24

Gene Alias

FLJ20261, MGC138169, MGC138173

Gene Description

keratin 24

Omim ID

[607742](#)

Gene Ontology

[Hyperlink](#)

Gene Summary

This gene encodes a member of the type I (acidic) keratin family, which belongs to the superfamily of intermediate filament (IF) proteins. Keratins are heteropolymeric structural proteins which form the intermediate filament. These filaments, along with actin microfilaments and microtubules, compose the cytoskeleton of epithelial cells. The type I keratin genes are clustered in a region of chromosome 17q12-q21. [provided by RefSeq]

Other Designations

-