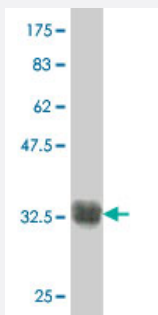


# KRT24 polyclonal antibody (A01)

Catalog # H00192666-A01

Size 50 uL

## Applications



Western Blot detection against Immunogen (37.11 kDa) .

## Specification

<b>Product Description</b>	Mouse polyclonal antibody raised against a partial recombinant KRT24.
<b>Immunogen</b>	KRT24 (NP_061889, 426 a.a. ~ 525 a.a) partial recombinant protein with GST tag.
<b>Sequence</b>	AEYKQLLDIKTRLEVEIETYRLLDGEGGGSSFAEFGGRNSGSVNMGSRDLVSGDSRSGSCSGQ GRDSSKTRVTKTMEELVDGKVSSQVSSISEVKVK
<b>Host</b>	Mouse
<b>Reactivity</b>	Human
<b>Quality Control Testing</b>	Antibody Reactive Against Recombinant Protein. Western Blot detection against Immunogen (37.11 kDa) .
<b>Storage Buffer</b>	50 % glycerol
<b>Storage Instruction</b>	Store at -20°C or lower. Aliquot to avoid repeated freezing and thawing.

## Applications

- Western Blot (Recombinant protein)

[Protocol Download](#)

- ELISA

## Gene Info — KRT24

Entrez GeneID	<a href="#">192666</a>
---------------	------------------------

GeneBank Accession#	<a href="#">NM_019016</a>
---------------------	---------------------------

Protein Accession#	<a href="#">NP_061889</a>
--------------------	---------------------------

Gene Name	KRT24
-----------	-------

Gene Alias	FLJ20261, MGC138169, MGC138173
------------	--------------------------------

Gene Description	keratin 24
------------------	------------

Omim ID	<a href="#">607742</a>
---------	------------------------

Gene Ontology	<a href="#">Hyperlink</a>
---------------	---------------------------

Gene Summary	This gene encodes a member of the type I (acidic) keratin family, which belongs to the superfamily of intermediate filament (IF) proteins. Keratins are heteropolymeric structural proteins which form the intermediate filament. These filaments, along with actin microfilaments and microtubules, compose the cytoskeleton of epithelial cells. The type I keratin genes are clustered in a region of chromosome 17q12-q21. [provided by RefSeq]
--------------	---

Other Designations	-
--------------------	---