

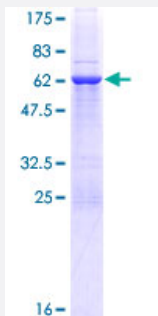
Full-Length

# GIMAP7 (Human) Recombinant Protein (P01)

Catalog # H00168537-P01

Size 25 ug, 10 ug

## Applications



## Specification

### Product Description

Human GIMAP7 full-length ORF ( NP\_694968.1, 1 a.a. - 300 a.a.) recombinant protein with GST-tag at N-terminal.

### Sequence

MAESDRSLRMLVGKTGSGKSATANTILGEEIFDSRIAQAQAVTKNCQKASREWQGRDLLVVDTP  
GLFDTKESLDTTCKEISRCIISCPGPHAMLVLLLGRYTEEEQKTVALIKAVFGKSAMKHMVILFTRK  
EELEGQSFHDFIADADVGLKSVKECGNRCCAFSNSKKTSAEKESQVQELVELIEKMQCNEG  
AYFSDDIYKDTEERLKQREEVLRKIYTDQLNEEIKLVEEDKHKSEEEKEKEIKLLKLKYDEKIKNIREE  
AERNIFKDVFNRIWKMLSEIWHRFLSKCKFYSS

### Host

Wheat Germ (in vitro)

### Theoretical MW (kDa)

60.9

### Preparation Method

[in vitro wheat germ expression system](#)

### Purification

Glutathione Sepharose 4 Fast Flow

### Quality Control Testing

12.5% SDS-PAGE Stained with Coomassie Blue.

### Storage Buffer

50 mM Tris-HCl, 10 mM reduced Glutathione, pH=8.0 in the elution buffer.

### Storage Instruction

Store at -80°C. Aliquot to avoid repeated freezing and thawing.

### Note

Best use within three months from the date of receipt of this protein.

## Applications

- Enzyme-linked Immunoabsorbent Assay
- Western Blot (Recombinant protein)
- Antibody Production
- Protein Array

## Gene Info — GIMAP7

**Entrez GeneID** [168537](#)

**GeneBank Accession#** [NM\\_153236.3](#)

**Protein Accession#** [NP\\_694968.1](#)

**Gene Name** GIMAP7

**Gene Alias** IAN7, MGC27027, hIAN7

**Gene Description** GTPase, IMAP family member 7

**Gene Ontology** [Hyperlink](#)

**Gene Summary** This gene encodes a protein belonging to the GTP-binding superfamily and to the immuno-associated nucleotide (IAN) subfamily of nucleotide-binding proteins. In humans, the IAN subfamily genes are located in a cluster at 7q36.1. [provided by RefSeq]

**Other Designations** immune associated nucleotide