

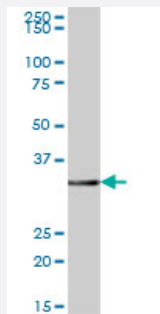
MaxPab®

# GIMAP7 purified MaxPab mouse polyclonal antibody (B01P)

Catalog # H00168537-B01P

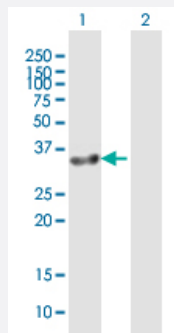
Size 50 ug

## Applications



### Western Blot (Tissue lysate)

GIMAP7 MaxPab polyclonal antibody. Western Blot analysis of GIMAP7 expression in human liver.



### Western Blot (Transfected lysate)

Western Blot analysis of GIMAP7 expression in transfected 293T cell line ([H00168537-T01](#)) by GIMAP7 MaxPab polyclonal antibody.

Lane 1: GIMAP7 transfected lysate(33 KDa).

Lane 2: Non-transfected lysate.

## Specification

### Product Description

Mouse polyclonal antibody raised against a full-length human GIMAP7 protein.

### Immunogen

GIMAP7 (NP\_694968.1, 1 a.a. ~ 300 a.a) full-length human protein.

### Sequence

MAESDRSLRMLVGKTGSGKSATANTILGEEIFDSRIAQAQAVTKNCQKASREWQGRDLLVVDTP  
GLFDTKESLDTTCKEISRCIISCPGPHAMLVLLLGRYTEEEQKTVALIKAVFGKSAMKHMVILFTRK  
EELEGQSFHDFIADADVGLKSNVKECGNRCCAFSNSKKTSKAEKESQVQELVELIEKMVQCNEG  
AYFSDDIYKDTEERLQREEVLRKIYTDQLNEEIKLVEEDKHKSEEEKEKEIKLLKLKYDEKIKNIREE  
AERNIFKDVFNRIWKMLSEIWHRFLSKCKFYSS

### Host

Mouse

Reactivity	Human
Quality Control Testing	Antibody reactive against mammalian transfected lysate.
Storage Buffer	In 1x PBS, pH 7.4
Storage Instruction	Store at -20°C or lower. Aliquot to avoid repeated freezing and thawing.

## Applications

- Western Blot (Tissue lysate)

GIMAP7 MaxPab polyclonal antibody. Western Blot analysis of GIMAP7 expression in human liver.

[Protocol Download](#)

- Western Blot (Transfected lysate)

Western Blot analysis of GIMAP7 expression in transfected 293T cell line ([H00168537-T01](#)) by GIMAP7 MaxPab polyclonal antibody.

Lane 1: GIMAP7 transfected lysate(33 KDa).

Lane 2: Non-transfected lysate.

[Protocol Download](#)

## Gene Info — GIMAP7

Entrez GeneID	<a href="#">168537</a>
GeneBank Accession#	<a href="#">NM_153236</a>
Protein Accession#	<a href="#">NP_694968.1</a>
Gene Name	GIMAP7
Gene Alias	IAN7, MGC27027, hIAN7
Gene Description	GTPase, IMAP family member 7
Gene Ontology	<a href="#">Hyperlink</a>
Gene Summary	This gene encodes a protein belonging to the GTP-binding superfamily and to the immuno-associated nucleotide (IAN) subfamily of nucleotide-binding proteins. In humans, the IAN subfamily genes are located in a cluster at 7q36.1. [provided by RefSeq]
Other Designations	immune associated nucleotide