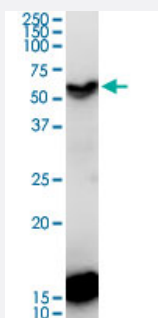


# CDC20B monoclonal antibody (M11), clone 2F2

Catalog # H00166979-M11

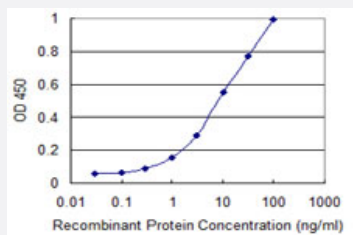
Size 100 ug

## Applications



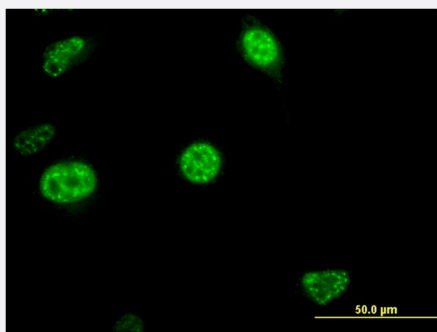
### Western Blot (Cell lysate)

CDC20B monoclonal antibody (M11), clone 2F2. Western Blot analysis of CDC20B expression in IMR-32.



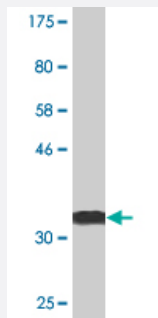
### Sandwich ELISA (Recombinant protein)

Detection limit for recombinant GST tagged CDC20B is 0.1 ng/ml as a capture antibody.



### Immunofluorescence

Immunofluorescence of monoclonal antibody to CDC20B on HeLa cell .  
[antibody concentration 10 ug/ml]



Western Blot detection against Immunogen (36.63 KDa) .

## Specification

|                                |   |
|--------------------------------|---|
| <b>Product Description</b>     | Mouse monoclonal antibody raised against a partial recombinant CDC20B.  |
| <b>Immunogen</b>               | CDC20B (NP_689836.2, 416 a.a. ~ 515 a.a) partial recombinant protein with GST tag. MW of the GST tag alone is 26 KDa. |
| <b>Sequence</b>                | VLAIGGGMKDGRHLHILDINAGKSIQTPSTNSQICSLWLPKTKEIATGQGTPKNDVTWTCPTVSRSG<br>HRGRVLHLALSPDQTRVFSAADGTASVWNCY                |
| <b>Host</b>                    | Mouse   |
| <b>Reactivity</b>              | Human   |
| <b>Isotype</b>                 | IgG1 Kappa  |
| <b>Quality Control Testing</b> | Antibody Reactive Against Recombinant Protein.<br>Western Blot detection against Immunogen (36.63 KDa) .              |
| <b>Storage Buffer</b>          | In 1x PBS, pH 7.4   |
| <b>Storage Instruction</b>     | Store at -20°C or lower. Aliquot to avoid repeated freezing and thawing.  |

## Applications

- Western Blot (Cell lysate)

CDC20B monoclonal antibody (M11), clone 2F2. Western Blot analysis of CDC20B expression in IMR-32.

[Protocol Download](#)

- Western Blot (Recombinant protein)

[Protocol Download](#)

- Sandwich ELISA (Recombinant protein)

Detection limit for recombinant GST tagged CDC20B is 0.1 ng/ml as a capture antibody.

[Protocol Download](#)

- ELISA

- Immunofluorescence

Immunofluorescence of monoclonal antibody to CDC20B on HeLa cell . [antibody concentration 10 ug/ml]

## Gene Info — CDC20B

|               |                        |
|---------------|------------------------|
| Entrez GeneID | <a href="#">166979</a> |
|---------------|------------------------|

|                     |                           |
|---------------------|---------------------------|
| GeneBank Accession# | <a href="#">NM_152623</a> |
|---------------------|---------------------------|

|                    |                             |
|--------------------|-----------------------------|
| Protein Accession# | <a href="#">NP_689836.2</a> |
|--------------------|-----------------------------|

|           |        |
|-----------|--------|
| Gene Name | CDC20B |
|-----------|--------|

|            |                      |
|------------|----------------------|
| Gene Alias | FLJ37927, G6VTS76519 |
|------------|----------------------|

|                  |  |
|------------------|--|
| Gene Description | cell division cycle 20 homolog B (S. cerevisiae) |
|------------------|--|

|               |                           |
|---------------|---------------------------|
| Gene Ontology | <a href="#">Hyperlink</a> |
|---------------|---------------------------|

|                    |  |
|--------------------|--|
| Other Designations | CDC20 cell division cycle 20 homolog B CDC20-like protein OTTHUMP00000161831 |
|--------------------|--|