

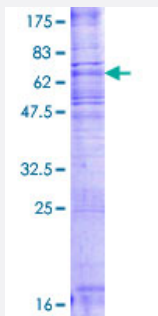
Full-Length

SGMS2 (Human) Recombinant Protein (P02)

Catalog # H00166929-P02

Size 25 ug, 10 ug

Applications



Specification

Product Description

Human SGMS2 full-length ORF (NP_689834.1, 1 a.a. - 365 a.a.) recombinant protein with GST-tag at N-terminal.

Sequence

MDIIE TAKLEE HLENQPSDPTNTYARPAEPVEEENKNGNGKPKSLSSGLRKGTKKYPDYQIAMPT
ESRNKFPLEWWKTGIAFIYAVFNLVLTVMITVVHERVPPKELSPPLPDKFFDYDRVKWAFSVSEI
NGIILVGLWITQWLFLRYKSIVGRRFCFIIGTL YLYRCITMYVTTLVPVGMHFQCAPKLNQDSQAKVQR
ILRLISGGGLSITGSHILCGDFLFSGHTVTLTLTYLFIKEYSPRHFWWYHLICWLLSAAGIICILVAHEHY
TIDVIAYYITTRLFWWWYHSMANEKNLKVSSQTNFLSRAWWFPIFYFFEKNVQGSIPCCFSWPLSWP
PGCFKSSCKKYSRVQKIGEDNEKST

Host

Wheat Germ (in vitro)

Theoretical MW (kDa)

68.7

Preparation Method

[in vitro wheat germ expression system](#)

Purification

Glutathione Sepharose 4 Fast Flow

Quality Control Testing

12.5% SDS-PAGE Stained with Coomassie Blue.

Storage Buffer

50 mM Tris-HCl, 10 mM reduced Glutathione, pH=8.0 in the elution buffer.

Storage Instruction

Store at -80°C. Aliquot to avoid repeated freezing and thawing.

Note

Best use within three months from the date of receipt of this protein.

Applications

- Enzyme-linked Immunoabsorbent Assay
- Western Blot (Recombinant protein)
- Antibody Production
- Protein Array

Gene Info — SGMS2

Entrez GeneID [166929](#)

GeneBank Accession# [NM_152621.3](#)

Protein Accession# [NP_689834.1](#)

Gene Name SGMS2

Gene Alias MGC26963, SMS2

Gene Description sphingomyelin synthase 2

Omim ID [611574](#)

Gene Ontology [Hyperlink](#)

Gene Summary Sphingomyelin, a major component of cell and Golgi membranes, is made by the transfer of phosphocholine from phosphatidylcholine onto ceramide, with diacylglycerol as a side product. The protein encoded by this gene is an enzyme that catalyzes this reaction primarily at the cell membrane. The synthesis is reversible, and this enzyme can catalyze the reaction in either direction. The encoded protein is required for cell growth. Three transcript variants encoding the same protein have been found for this gene. There is evidence for more variants, but the full-length nature of their transcripts has not been determined

Other Designations OTTHUMP00000162627|OTTHUMP00000162628|SM synthase|phosphatidylcholine:ceramide cholinephosphotransferase 2

Pathway

- [Metabolic pathways](#)
- [Sphingolipid metabolism](#)

Disease

- [Alcoholism](#)
- [Genetic Predisposition to Disease](#)