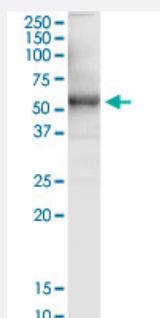


# SGMS2 monoclonal antibody (M08), clone 7D10

Catalog # H00166929-M08

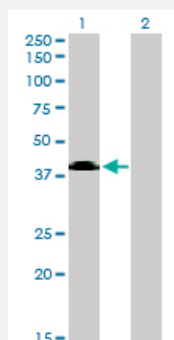
Size 100 ug

## Applications



### Western Blot (Tissue lysate)

SGMS2 monoclonal antibody (M08), clone 7D10. Western Blot analysis of SGMS2 expression in human stomach.

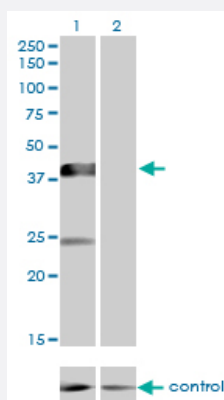


### Western Blot (Transfected lysate)

Western Blot analysis of SGMS2 expression in transfected 293T cell line by SGMS2 monoclonal antibody (M08), clone 7D10.

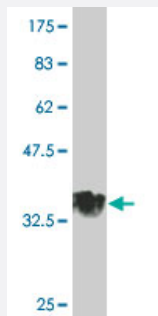
Lane 1: SGMS2 transfected lysate(42.3 KDa).

Lane 2: Non-transfected lysate.



### RNAi Knockdown (Antibody validated)

Western blot analysis of SGMS2 over-expressed 293 cell line, cotransfected with SGMS2 Validated Chimera RNAi ( Cat # H00166929-R01V ) (Lane 2) or non-transfected control (Lane 1). Blot probed with SGMS2 monoclonal antibody (M08), clone 7D10 (Cat # H00166929-M08 ). GAPDH ( 36.1 kDa ) used as specificity and loading control.



Western Blot detection against Immunogen (34.43 KDa) .

## Specification

|                                |   |
|--------------------------------|---|
| <b>Product Description</b>     | Mouse monoclonal antibody raised against a partial recombinant SGMS2.   |
| <b>Immunogen</b>               | SGMS2 (NP_689834, 2 a.a. ~ 80 a.a) partial recombinant protein with GST tag. MW of the GST tag alone is 26 KDa. |
| <b>Sequence</b>                | DIETAKLEEHLNQPSDPTNTYARPAEPVEEENKNGNGKPKSLSSGLRKGTKKYPDYIQIAMPTE<br>RNKFPLEWWKTG                                |
| <b>Host</b>                    | Mouse   |
| <b>Reactivity</b>              | Human   |
| <b>Isotype</b>                 | IgG2a Kappa   |
| <b>Quality Control Testing</b> | Antibody Reactive Against Recombinant Protein.<br>Western Blot detection against Immunogen (34.43 KDa) .        |
| <b>Storage Buffer</b>          | In 1x PBS, pH 7.4   |
| <b>Storage Instruction</b>     | Store at -20°C or lower. Aliquot to avoid repeated freezing and thawing.  |

## Applications

- Western Blot (Tissue lysate)

SGMS2 monoclonal antibody (M08), clone 7D10. Western Blot analysis of SGMS2 expression in human stomach.

[Protocol Download](#)

- Western Blot (Transfected lysate)

Western Blot analysis of SGMS2 expression in transfected 293T cell line by SGMS2 monoclonal antibody (M08), clone 7D10.

Lane 1: SGMS2 transfected lysate(42.3 KDa).

Lane 2: Non-transfected lysate.

[Protocol Download](#)

- Western Blot (Recombinant protein)

[Protocol Download](#)

- ELISA

- RNAi Knockdown (Antibody validated)

Western blot analysis of SGMS2 over-expressed 293 cell line, cotransfected with SGMS2 Validated Chimera RNAi ( Cat # H00166929-R01V ) (Lane 2) or non-transfected control (Lane 1). Blot probed with SGMS2 monoclonal antibody (M08), clone 7D10 (Cat # H00166929-M08 ). GAPDH ( 36.1 kDa ) used as specificity and loading control.

[Protocol Download](#)

## Gene Info — SGMS2

Entrez GeneID [166929](#)

GeneBank Accession# [NM\\_152621](#)

Protein Accession# [NP\\_689834](#)

Gene Name SGMS2

Gene Alias MGC26963, SMS2

Gene Description sphingomyelin synthase 2

Omim ID [611574](#)

Gene Ontology [Hyperlink](#)

**Gene Summary** Sphingomyelin, a major component of cell and Golgi membranes, is made by the transfer of phosphocholine from phosphatidylcholine onto ceramide, with diacylglycerol as a side product. The protein encoded by this gene is an enzyme that catalyzes this reaction primarily at the cell membrane. The synthesis is reversible, and this enzyme can catalyze the reaction in either direction. The encoded protein is required for cell growth. Three transcript variants encoding the same protein have been found for this gene. There is evidence for more variants, but the full-length nature of their transcripts has not been determined

**Other Designations**

OTTHUMP00000162627|OTTHUMP00000162628|SM synthase|phosphatidylcholine:ceramide c  
holinephosphotransferase 2

**Pathway**

- [Metabolic pathways](#)
- [Sphingolipid metabolism](#)

**Disease**

- [Alcoholism](#)
- [Genetic Predisposition to Disease](#)