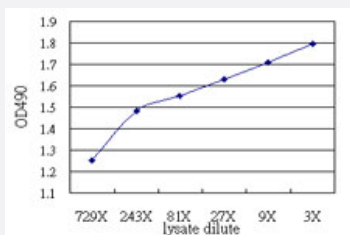


RNF168 (Human) Matched Antibody Pair

Catalog # H00165918-AP51

Size 1 Set

Applications



Sandwich ELISA detection sensitivity ranging from approximately 729x to 3x dilution of the RNF168 293T overexpression lysate (non-denatured).

Specification

Product Description

This antibody pair set comes with a matched antibody pair to detect and quantify the protein level of human RNF168.

Reactivity

Human

Quality Control Testing

Standard curve using RNF168 293T overexpression lysate (non-denatured) as an analyte. Sandwich ELISA detection sensitivity ranging from approximately 729x to 3x dilution of the RNF168 293T overexpression lysate (non-denatured).

Supplied Product

Antibody pair set content:
 1. Capture antibody: mouse monoclonal anti-RNF168, IgG2b Kappa (100 ug)
 2. Detection antibody: rabbit purified polyclonal anti-RNF168 (50 ug)
 *Reagents are sufficient for at least 3-5 x 96 well plates using recommended protocols.

Storage Instruction

Store reagents of the antibody pair set at -20°C or lower. Please aliquot to avoid repeated freeze thaw cycle. Reagents should be returned to -20°C storage immediately after use.

Applications

- ELISA Pair (Transfected lysate)

[Protocol Download](#)

Gene Info — RNF168

Entrez GeneID [165918](#)**Gene Name** RNF168**Gene Alias** FLJ35794**Gene Description** ring finger protein 168**Gene Ontology** [Hyperlink](#)

Gene Summary The complex repair response elicited by DNA double-strand breaks (DSBs) includes recruitment of several DNA repair proteins and ubiquitination of H2A-type histones (see MIM 142720). RNF168 is an E3 ubiquitin ligase critical for DSB repair (Stewart et al., 2009 [PubMed 19203578]).[supplied by OMIM]

Other Designations -