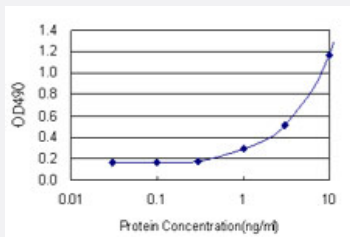


RNF168 (Human) Matched Antibody Pair

Catalog # H00165918-AP21 Size 1 Set

Applications



Sandwich ELISA detection sensitivity ranging from 0.3 ng/ml to 100 ng/ml.

Specification

Product Description	This antibody pair set comes with a matched antibody pair to detect and quantify the protein level of human RNF168.
Reactivity	Human
Quality Control Testing	Standard curve using recombinant protein (H00165918-P01) as an analyte. Sandwich ELISA detection sensitivity ranging from 0.3 ng/ml to 100 ng/ml.
Supplied Product	Antibody pair set content: 1. Capture antibody: rabbit MaxPab® affinity purified polyclonal anti-RNF168 (100 ug) 2. Detection antibody: mouse purified polyclonal anti-RNF168 (20 ug) *Reagents are sufficient for at least 1-2 x 96 well plates using recommended protocols.
Storage Instruction	Store reagents of the antibody pair set at -20°C or lower. Please aliquot to avoid repeated freeze thaw cycle. Reagents should be returned to -20°C storage immediately after use.

Applications

- ELISA Pair (Recombinant protein)

[Protocol Download](#)

Gene Info — RNF168

Entrez GeneID	165918
---------------	------------------------

Gene Name	RNF168
-----------	--------

Gene Alias	FLJ35794
------------	----------

Gene Description	ring finger protein 168
------------------	-------------------------

Gene Ontology	Hyperlink
---------------	---------------------------

Gene Summary	The complex repair response elicited by DNA double-strand breaks (DSBs) includes recruitment of several DNA repair proteins and ubiquitination of H2A-type histones (see MIM 142720). RNF168 is an E3 ubiquitin ligase critical for DSB repair (Stewart et al., 2009 [PubMed 19203578]).[supplied by OMIM]
--------------	--

Other Designations	-
--------------------	---