

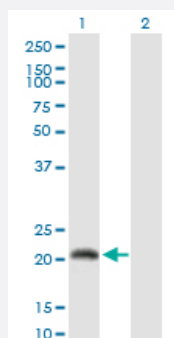
MaxPab®

CALML6 purified MaxPab rabbit polyclonal antibody (D01P)

Catalog # H00163688-D01P

Size 100 ug

Applications

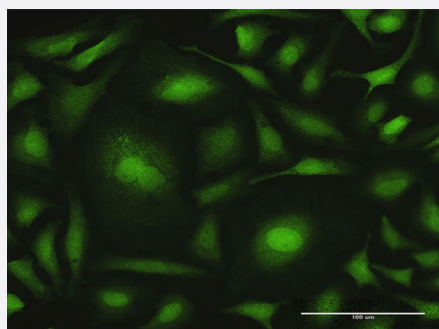


Western Blot (Transfected lysate)

Western Blot analysis of CALML6 expression in transfected 293T cell line ([H00163688-T01](#)) by CALML6 MaxPab polyclonal antibody.

Lane 1: CALML6 transfected lysate(19.91 KDa).

Lane 2: Non-transfected lysate.



Immunofluorescence

Immunofluorescence of purified MaxPab antibody to CALML6 on HeLa cell. [antibody concentration 10 ug/ml]

Specification

| | |
|---------------------|--|
| Product Description | Rabbit polyclonal antibody raised against a full-length human CALML6 protein. |
| Immunogen | CALML6 (AA160060.1, 1 a.a. ~ 181 a.a) full-length human protein. |
| Sequence | MGLQQEISLQPWCHHPAESCQTTTDMTERLSAEQIKEYKGVFEMFDEEGNGEVKTGELEWLMSL LGINPTKSELASMAKDVDNRNKGFFNCDGFLALMGVYHEKAQNGESELRAAFRVFDKEGKGYID WNTLKYVLMNAGEPLNEVEAEQMMKEADKDGDRITIDYEEFVAMMTGESFKLIQ |
| Host | Rabbit |
| Reactivity | Human |

| | |
|-------------------------|--|
| Quality Control Testing | Antibody reactive against mammalian transfected lysate. |
| Storage Buffer | In 1x PBS, pH 7.4 |
| Storage Instruction | Store at -20°C or lower. Aliquot to avoid repeated freezing and thawing. |

Applications

- Western Blot (Transfected lysate)

Western Blot analysis of CALML6 expression in transfected 293T cell line ([H00163688-T01](#)) by CALML6 MaxPab polyclonal antibody.

Lane 1: CALML6 transfected lysate(19.91 KDa).

Lane 2: Non-transfected lysate.

[Protocol Download](#)

- Immunofluorescence

Immunofluorescence of purified MaxPab antibody to CALML6 on HeLa cell. [antibody concentration 10 ug/ml]

Gene Info — CALML6

| | |
|---------------------|--|
| Entrez GeneID | 163688 |
| GeneBank Accession# | BC160060.1 |
| Protein Accession# | AA160060.1 |
| Gene Name | CALML6 |
| Gene Alias | CAGLP |
| Gene Description | calmodulin-like 6 |
| Omim ID | 610171 |
| Gene Ontology | Hyperlink |
| Other Designations | EF-hand protein OTTHUMP00000179025 calglandulin-like protein |

Pathway

- [Calcium signaling pathway](#)

- [Glioma](#)
- [GnRH signaling pathway](#)
- [Insulin signaling pathway](#)
- [Long-term potentiation](#)
- [Melanogenesis](#)
- [Neurotrophin signaling pathway](#)
- [Olfactory transduction](#)
- [Phosphatidylinositol signaling system](#)
- [Vascular smooth muscle contraction](#)