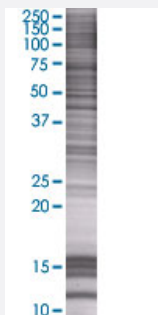


FLJ38964 293T Cell Transient Overexpression Lysate(Denatured)

Catalog # H00161253-T01

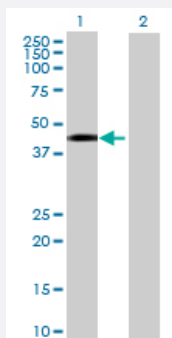
Size 100 uL

Applications



SDS-PAGE Gel

REM2 transfected lysate.



Western Blot

Lane 1: REM2 transfected lysate (0 KDa)

Lane 2: Non-transfected lysate.

Specification

Transfected Cell Line 293T

Plasmid pCMV-FLJ38964 full-length

Host Human

Theoretical MW (kDa) 36.3

Quality Control Testing Transient overexpression cell lysate was tested with Anti-FLJ38964 antibody ([H00161253-B01](#)) by Western Blots.
 SDS-PAGE Gel
 REM2 transfected lysate.
 Western Blot
 Lane 1: REM2 transfected lysate (0 KDa)
 Lane 2: Non-transfected lysate.

Storage Buffer	1X Sample Buffer (50 mM Tris-HCl, 2% SDS, 10% glycerol, 300 mM 2-mercaptoethanol, 0.01% Bromophenol blue)
Storage Instruction	Store at -80°C. Aliquot to avoid repeated freezing and thawing.

Applications

- Western Blot

Gene Info — REM2

Entrez GeneID	161253
GeneBank Accession#	BC035663
Protein Accession#	AAH35663
Gene Name	REM2
Gene Alias	FLJ38964
Gene Description	RAS (RAD and GEM)-like GTP binding 2
Gene Ontology	Hyperlink
Other Designations	Rad and Gem-related 2 (rat homolog) rad and gem related GTP binding protein 2