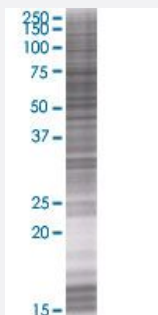


CLEC14A 293T Cell Transient Overexpression Lysate(Denatured)

Catalog # H00161198-T01

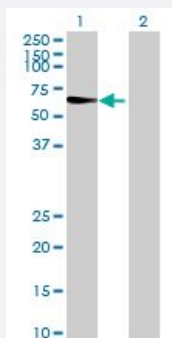
Size 100 uL

Applications



SDS-PAGE Gel

CLEC14A transfected lysate.



Western Blot

Lane 1: CLEC14A transfected lysate (51.6 KDa)

Lane 2: Non-transfected lysate.

Specification

Transfected Cell Line 293T

Plasmid pCMV-CLEC14A full-length

Host Human

Theoretical MW (kDa) 51.6

Quality Control Testing Transient overexpression cell lysate was tested with Anti-CLEC14A antibody ([H00161198-B01](#)) by Western Blots.
SDS-PAGE Gel
CLEC14A transfected lysate.
Western Blot
Lane 1: CLEC14A transfected lysate (51.6 KDa)
Lane 2: Non-transfected lysate.

Storage Buffer

1X Sample Buffer (50 mM Tris-HCl, 2% SDS, 10% glycerol, 300 mM 2-mercaptoethanol, 0.01% Bromophenol blue)

Storage Instruction

Store at -80°C. Aliquot to avoid repeated freezing and thawing.

Applications

- Western Blot

Gene Info — CLEC14A

Entrez GeneID[161198](#)**GeneBank Accession#**[NM_175060](#)**Protein Accession#**[NP_778230](#)**Gene Name**

CLEC14A

Gene Alias

C14orf27, CEG1

Gene Description

C-type lectin domain family 14, member A

Gene Ontology[Hyperlink](#)**Gene Summary**

O

Other Designations

CLECT and EGF-like domain containing protein|OTTHUMP00000178873