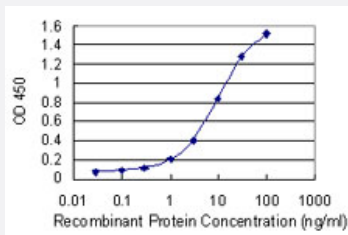


# GPR180 monoclonal antibody (M01), clone 1D8

Catalog # H00160897-M01

Size 100 ug

## Applications



### Sandwich ELISA (Recombinant protein)

Detection limit for recombinant GST tagged GPR180 is 0.1 ng/ml as a capture antibody.

## Specification

<b>Product Description</b>	Mouse monoclonal antibody raised against a partial recombinant GPR180.
<b>Immunogen</b>	GPR180 (NP_851320.1, 21 a.a. ~ 120 a.a) partial recombinant protein with GST tag. MW of the GST tag alone is 26 KDa.
<b>Sequence</b>	QGKTLRGSFSSTAAQDAQGQRIGHFEFHGDHALLCVRINNIHAVVGKEAKLYLFQAQEWLKLQQS SHGYSCSEKLSKAQLTMTMNQTEHNLTVSQIPSPQ
<b>Host</b>	Mouse
<b>Reactivity</b>	Human
<b>Isotype</b>	IgG1 Kappa
<b>Quality Control Testing</b>	Antibody Reactive Against Recombinant Protein.
<b>Storage Buffer</b>	In 1x PBS, pH 7.4
<b>Storage Instruction</b>	Store at -20°C or lower. Aliquot to avoid repeated freezing and thawing.

## Applications

- Sandwich ELISA (Recombinant protein)

Detection limit for recombinant GST tagged GPR180 is 0.1 ng/ml as a capture antibody.

[Protocol Download](#)

- ELISA

## Gene Info — GPR180

Entrez GeneID	<a href="#">160897</a>
GeneBank Accession#	<a href="#">NM_180989</a>
Protein Accession#	<a href="#">NP_851320.1</a>
Gene Name	GPR180
Gene Alias	ITR
Gene Description	G protein-coupled receptor 180
Omim ID	<a href="#">607787</a>
Gene Ontology	<a href="#">Hyperlink</a>
Gene Summary	This gene encodes a protein that is a member of the G protein-coupled receptor superfamily. This protein is produced predominantly in vascular smooth muscle cells and may play an important role in the regulation of vascular remodeling. [provided by RefSeq]
Other Designations	OTTHUMP00000018556 OTTHUMP00000040761 intimal thickness related receptor intimal thickness-related receptor