

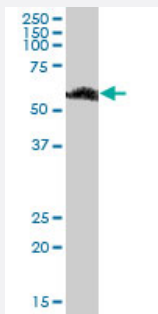
MaxPab®

RBMY1F purified MaxPab mouse polyclonal antibody (B01P)

Catalog # H00159163-B01P

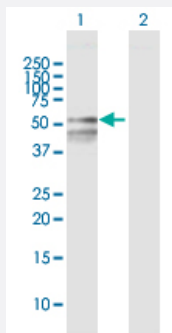
Size 50 ug

Applications



Western Blot (Tissue lysate)

RBMY1F MaxPab polyclonal antibody. Western Blot analysis of RBMY1F expression in human kidney.

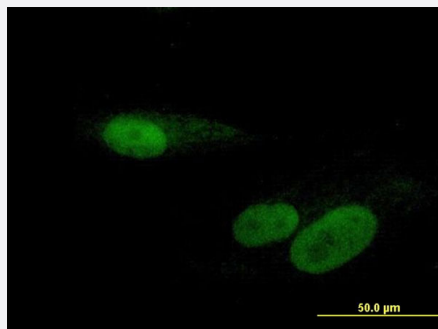


Western Blot (Transfected lysate)

Western Blot analysis of RBMY1F expression in transfected 293T cell line ([H00159163-T01](#)) by RBMY1F MaxPab polyclonal antibody.

Lane 1: RBMY1F transfected lysate(54.56 kDa).

Lane 2: Non-transfected lysate.



Immunofluorescence

Immunofluorescence of purified MaxPab antibody to RBMY1F on Hs 181.Tes cell. [antibody concentration 10 ug/ml]

Specification

Product Description

Mouse polyclonal antibody raised against a full-length human RBMY1F protein.

Immunogen	RBMY1F (NP_001006117.2, 1 a.a. ~ 496 a.a) full-length human protein.
Sequence	MVEADHPGKLFIGGLNRETNEKMLKAVFGKHGPISEVLLIKDRTSKSRGFAFITFENPADAKNAAK DMNGTSLHGKAIKVEQAKKPSFQSGGRRRPPASSRNRSPSGSLRSARGSSGGTRGWLP SHEG HLDDGGYTDLKMSYSRGLIPVKRGPSSRS GGPPPKKSAPSAVARNSNSWMGSQGPMSQRREN YGVPPRRATISSWRNDRMSTRHDGYATNDGNHPSCQETRDYAPPSRGYAYRDNGHSNRDEHSS RGYRNHRSSRETRDYAPPSRGHAYRDYGHSSRDESYSGYRNHRSSRETREYAPPSRGHGYRDY GHSRRHESYSRGYRNHPSSRETRDYAPPHRDYAYRDYGHSSWDEHSSRGYSYHDGYGEALGRD HSEHLGSSYRDALQRYGTSHGAPPARGPRMSYGGSTCHAYSNTRDRYGRSWESYSSCGDFHY CDREHVC RKDQRNPPSLGRVLPDPREAYGSSSYVASVDGGESRSEKGDSSRY
Host	Mouse
Reactivity	Human
Quality Control Testing	Antibody reactive against mammalian transfected lysate.
Storage Buffer	In 1x PBS, pH 7.4
Storage Instruction	Store at -20°C or lower. Aliquot to avoid repeated freezing and thawing.

Applications

- Western Blot (Tissue lysate)

RBMY1F MaxPab polyclonal antibody. Western Blot analysis of RBMY1F expression in human kidney.

[Protocol Download](#)

- Western Blot (Transfected lysate)

Western Blot analysis of RBMY1F expression in transfected 293T cell line ([H00159163-T01](#)) by RBMY1F MaxPab polyclonal antibody.

Lane 1: RBMY1F transfected lysate(54.56 KDa).

Lane 2: Non-transfected lysate.

[Protocol Download](#)

- Immunofluorescence

Immunofluorescence of purified MaxPab antibody to RBMY1F on Hs 181.Tes cell. [antibody concentration 10 ug/ml]

Gene Info — RBMY1F

Entrez GeneID

[159163](#)

GeneBank Accession#

[NM_001006117](#)

Protein Accession#	NP_001006117.2
Gene Name	RBMY1F
Gene Alias	MGC33094, YRRM2
Gene Description	RNA binding motif protein, Y-linked, family 1, member F
Gene Ontology	Hyperlink
Gene Summary	<p>This gene encodes a protein containing an RNA-binding motif in the N-terminus and four SRGY (serine, arginine, glycine, tyrosine) boxes in the C-terminus. Multiple copies of this gene are found in the AZFb azoospermia factor region of chromosome Y and the encoded protein is thought to be involved in spermatogenesis. Most copies of this locus are pseudogenes, although six highly similar copies have full-length ORFs and are considered functional. Four functional copies of this gene are found within inverted repeat IR2; two functional copies of this gene are found in palindrome P3, along with two copies of PTPN13-like, Y-linked. [provided by RefSeq]</p>
Other Designations	OTTHUMP00000040530