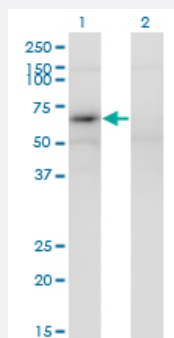


# MAGEB6 monoclonal antibody (M02), clone 2C11

Catalog # H00158809-M02

Size 100 ug

## Applications

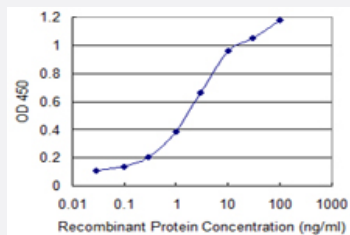


### Western Blot (Transfected lysate)

Western Blot analysis of MAGEB6 expression in transfected 293T cell line by MAGEB6 monoclonal antibody (M02), clone 2C11.

Lane 1: MAGEB6 transfected lysate (44 KDa).

Lane 2: Non-transfected lysate.



### Sandwich ELISA (Recombinant protein)

Detection limit for recombinant GST tagged MAGEB6 is 0.03 ng/ml as a capture antibody.

Western Blot detection against Immunogen (37.84 KDa) .

## Specification

### Product Description

Mouse monoclonal antibody raised against a partial recombinant MAGEB6.

<b>Immunogen</b>	MAGEB6 (NP_775794.2, 135 a.a. ~ 244 a.a) partial recombinant protein with GST tag. MW of the GST tag alone is 26 KDa.
<b>Sequence</b>	SPSTSHDVSVPQESQGASPTGSPDAGVSGSKYDVAAGEDEESVSASQKAIIFKRLSKDAVKKK ACTLAQFLQKKFEKKESILKADMLKCVRREYKPYFPQILNRTSQHL
<b>Host</b>	Mouse
<b>Reactivity</b>	Human
<b>Isotype</b>	IgG2a Kappa
<b>Quality Control Testing</b>	Antibody Reactive Against Recombinant Protein. Western Blot detection against Immunogen (37.84 KDa) .
<b>Storage Buffer</b>	In 1x PBS, pH 7.4
<b>Storage Instruction</b>	Store at -20°C or lower. Aliquot to avoid repeated freezing and thawing.

## Applications

- Western Blot (Transfected lysate)

Western Blot analysis of MAGEB6 expression in transfected 293T cell line by MAGEB6 monoclonal antibody (M02), clone 2C11.

Lane 1: MAGEB6 transfected lysate(44 KDa).

Lane 2: Non-transfected lysate.

[Protocol Download](#)

- Western Blot (Recombinant protein)

[Protocol Download](#)

- Sandwich ELISA (Recombinant protein)

Detection limit for recombinant GST tagged MAGEB6 is 0.03 ng/ml as a capture antibody.

[Protocol Download](#)

- ELISA

## Gene Info — MAGEB6

Entrez GeneID [158809](#)

GeneBank Accession#	<a href="#">NM_173523</a>
Protein Accession#	<a href="#">NP_775794.2</a>
Gene Name	MAGEB6
Gene Alias	FLJ40242, MAGE-B6, MAGEB6A
Gene Description	melanoma antigen family B, 6
Omim ID	<a href="#">300467</a>
Gene Ontology	<a href="#">Hyperlink</a>
Gene Summary	<p>This gene is a member of the MAGEB gene family. The members of this family have their entire coding sequences located in the last exon, and the encoded proteins show 50 to 68% sequence identity to each other. The promoters and first exons of the MAGEB genes show considerable variability, suggesting that the existence of this gene family enables the same function to be expressed under different transcriptional controls. This gene is expressed in testis, and in a significant fraction of tumors of various histological types. The MAGEB genes are clustered on chromosome Xp22-p21. [provided by RefSeq]</p>
Other Designations	OTTHUMP00000023093