

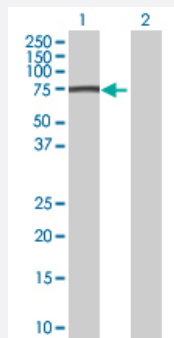
MaxPab®

# MAGEB6 MaxPab mouse polyclonal antibody (B01)

Catalog # H00158809-B01

Size 50 uL

## Applications

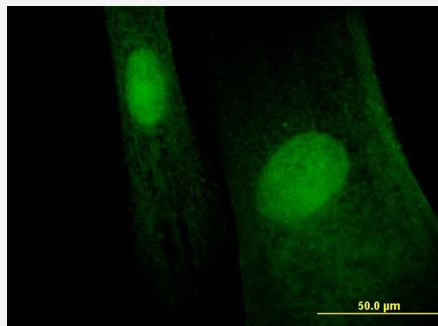


### Western Blot (Transfected lysate)

Western Blot analysis of MAGEB6 expression in transfected 293T cell line ([H00158809-T01](#)) by MAGEB6 MaxPab polyclonal antibody.

Lane 1: MAGEB6 transfected lysate(44.77 KDa).

Lane 2: Non-transfected lysate.



### Immunofluorescence

Immunofluorescence of purified MaxPab antibody to MAGEB6 on Hs 181.Tes cell. [antibody concentration 20 ug/ml]

## Specification

### Product Description

Mouse polyclonal antibody raised against a full-length human MAGEB6 protein.

### Immunogen

MAGEB6 (NP\_775794.2, 1 a.a. ~ 407 a.a) full-length human protein.

### Sequence

MPRGHKSCLRTEKQETNGQPQGLTGPAATAEKQEESHSSSSSSSRACLGDCRRSSDASIPQE  
SQGVSPGTGSPDAVVSYSKSDVAANGQDEKSPSTSRDASVPQESQGASPTGSPDAGVSGSKYD  
VAANGQDEKSPSTSHDVSVQESQGASPTGSPDAGVSGSKYDVAAEGEDEESVSASQKAIIFK  
RLSKDAVKKKACTLAQFLQKKFEKKESILKADMLKCVRREYKPYFPQILNRTSQHLVVAFGVELK  
EMDSSGESYTLVSKLGLPSEGILSGDNALPKSGLLSLLVVIFMNGNCATEEEVWEFLGLLGYDG  
ILHSYGDARKIITEDLVQDKYVVYRQVCNSDPPCYEFLWGPRAYAETTKMRVLRVLADSSNTSPGL  
YPHLYEDALIDEVERALRLRA

Host	Mouse
Reactivity	Human
Quality Control Testing	Antibody reactive against mammalian transfected lysate.
Storage Buffer	No additive
Storage Instruction	Store at -20°C or lower. Aliquot to avoid repeated freezing and thawing.
Note	For IHC and IF applications, antibody purification with Protein A will be needed prior to use.

## Applications

- Western Blot (Transfected lysate)

Western Blot analysis of MAGEB6 expression in transfected 293T cell line ([H00158809-T01](#)) by MAGEB6 MaxPab polyclonal antibody.

Lane 1: MAGEB6 transfected lysate(44.77 KDa).

Lane 2: Non-transfected lysate.

[Protocol Download](#)

- Immunofluorescence

Immunofluorescence of purified MaxPab antibody to MAGEB6 on Hs 181.Tes cell. [antibody concentration 20 ug/ml]

## Gene Info — MAGEB6

Entrez GeneID	<a href="#">158809</a>
GeneBank Accession#	<a href="#">NM_173523.2</a>
Protein Accession#	<a href="#">NP_775794.2</a>
Gene Name	MAGEB6
Gene Alias	FLJ40242, MAGE-B6, MAGEB6A
Gene Description	melanoma antigen family B, 6
Omim ID	<a href="#">300467</a>
Gene Ontology	<a href="#">Hyperlink</a>

**Gene Summary**

This gene is a member of the MAGEB gene family. The members of this family have their entire coding sequences located in the last exon, and the encoded proteins show 50 to 68% sequence identity to each other. The promoters and first exons of the MAGEB genes show considerable variability, suggesting that the existence of this gene family enables the same function to be expressed under different transcriptional controls. This gene is expressed in testis, and in a significant fraction of tumors of various histological types. The MAGEB genes are clustered on chromosome Xp22-p21. [provided by RefSeq]

**Other Designations**

OTTHUMP00000023093