

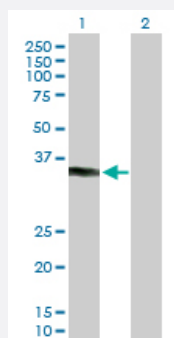
MaxPab®

## KCTD7 purified MaxPab mouse polyclonal antibody (B01P)

Catalog # H00154881-B01P

Size 50 ug

### Applications

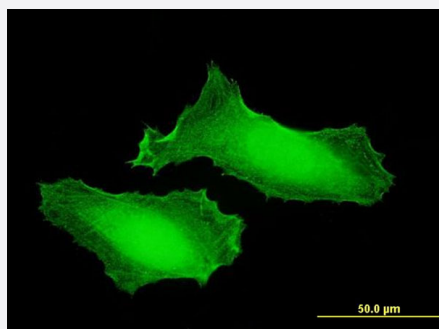


#### Western Blot (Transfected lysate)

Western Blot analysis of KCTD7 expression in transfected 293T cell line ([H00154881-T02](#)) by KCTD7 MaxPab polyclonal antibody.

Lane 1: KCTD7 transfected lysate(31.79 KDa).

Lane 2: Non-transfected lysate.



#### Immunofluorescence

Immunofluorescence of purified MaxPab antibody to KCTD7 on HeLa cell. [antibody concentration 10 ug/ml]

### Specification

#### Product Description

Mouse polyclonal antibody raised against a full-length human KCTD7 protein.

#### Immunogen

KCTD7 (NP\_694578, 1 a.a. ~ 289 a.a) full-length human protein.

#### Sequence

MVVVTGREPDSRRQDGAMSSSDAEDDFLEPATPTATQAGHALPLLQEFPEVVPLNIGGAHFTT  
RLSTLRICYEDTMLAAMFSGRHYIPTDSEGRYFIDRDGTHFGDVLNFLRSGDLPPRERVRVYKEA  
QYYAIGPLLEQLNMQPLKGEKVRQAFLGLMPYYKDHLERIVEIARLRAVQRKARFAKLKVCVFKE  
EMPITPYECPLLNSLRFERSESDGQLFEHHCEVDVSFGPWAEAVADVDLLHCLVTDLSAQLTV  
DHQCIGVCDKHLVNHYYCKRPIYEFKITWW

#### Host

Mouse

Reactivity	Human
Quality Control Testing	Antibody reactive against mammalian transfected lysate.
Storage Buffer	In 1x PBS, pH 7.4
Storage Instruction	Store at -20°C or lower. Aliquot to avoid repeated freezing and thawing.

## Applications

- Western Blot (Transfected lysate)

Western Blot analysis of KCTD7 expression in transfected 293T cell line ([H00154881-T02](#)) by KCTD7 MaxPab polyclonal antibody.

Lane 1: KCTD7 transfected lysate(31.79 KDa).

Lane 2: Non-transfected lysate.

[Protocol Download](#)

- Immunofluorescence

Immunofluorescence of [purified](#) MaxPab antibody to KCTD7 on HeLa cell. [antibody concentration 10 ug/ml]

## Gene Info — KCTD7

Entrez GeneID	<a href="#">154881</a>
GeneBank Accession#	<a href="#">NM_153033</a>
Protein Accession#	<a href="#">NP_694578</a>
Gene Name	KCTD7
Gene Alias	EPM3, FLJ32069
Gene Description	potassium channel tetramerisation domain containing 7
Gene Ontology	<a href="#">Hyperlink</a>
Gene Summary	The KCTD gene family, including KCTD7, encode predicted proteins that contain N-terminal domain that is homologous to the T1 domain in voltage-gated potassium channels (see KCNA1; MIM 176260). KCTD7 displays a primary sequence and hydropathy profile indicating intracytoplasmic localization. EST database analysis showed that KCTD7 is expressed in human and mouse brain (Van Bogaert et al., 2007 [PubMed 17455289]).[supplied by OMIM]
Other Designations	-