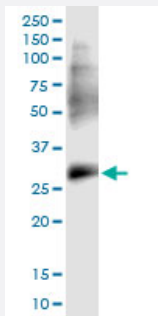


PPP1R2P3 (Human) IP-WB Antibody Pair

Catalog # H00153743-PW1

Size 1 Set

Applications



Immunoprecipitation of PPP1R2P3 transfected lysate using rabbit polyclonal anti-PPP1R2P3 and Protein A Magnetic Bead ([U0007](#)), and immunoblotted with mouse polyclonal anti-PPP1R2P3.

Specification

Product Description	This IP-WB antibody pair set comes with one antibody for immunoprecipitation and another to detect the precipitated protein in western blot.
Reactivity	Human
Quality Control Testing	Immunoprecipitation-Western Blot (IP-WB) Immunoprecipitation of PPP1R2P3 transfected lysate using rabbit polyclonal anti-PPP1R2P3 and Protein A Magnetic Bead (U0007), and immunoblotted with mouse polyclonal anti-PPP1R2P3.
Supplied Product	Antibody pair set content: 1. Antibody pair for IP: rabbit polyclonal anti-PPP1R2P3 (300 ul) 2. Antibody pair for WB: mouse polyclonal anti-PPP1R2P3 (50 ul)
Storage Instruction	Store reagents of the antibody pair set at -20°C or lower. Please aliquot to avoid repeated freeze thaw cycle. Reagents should be returned to -20°C storage immediately after use.

Applications

- Immunoprecipitation-Western Blot

[Protocol Download](#)

Gene Info — PPP1R2P3

Entrez GeneID	153743
---------------	------------------------

Gene Name	PPP1R2P3
-----------	----------

Gene Alias	MGC87149
------------	----------

Gene Description	protein phosphatase 1, regulatory (inhibitor) subunit 2 pseudogene 3
------------------	--

Gene Ontology	Hyperlink
---------------	---------------------------

Gene Summary	O
--------------	---

Other Designations	-
--------------------	---