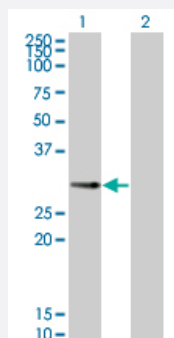


# PPP1R2P3 monoclonal antibody (M01), clone 2G11

Catalog # H00153743-M01

Size 50 ug

## Applications

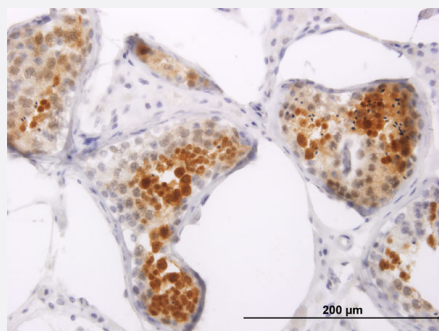


### Western Blot (Transfected lysate)

Western Blot analysis of PPP1R2P3 expression in transfected 293T cell line by PPP1R2P3 monoclonal antibody (M01), clone 2G11.

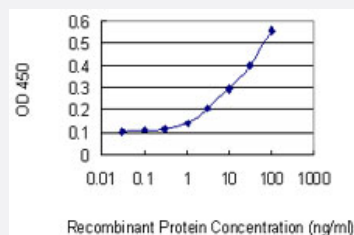
Lane 1: PPP1R2P3 transfected lysate(23 KDa).

Lane 2: Non-transfected lysate.



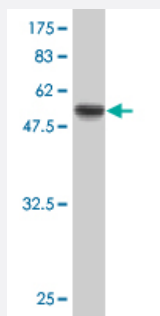
### Immunohistochemistry (Formalin/PFA-fixed paraffin-embedded sections)

Immunoperoxidase of monoclonal antibody to PPP1R2P3 on formalin-fixed paraffin-embedded human testis. [antibody concentration 3 ug/ml]



### Sandwich ELISA (Recombinant protein)

Detection limit for recombinant GST tagged PPP1R2P3 is 0.3 ng/ml as a capture antibody.



Western Blot detection against Immunogen (48.29 KDa) .

## Specification

<b>Product Description</b>	Mouse monoclonal antibody raised against a full length recombinant PPP1R2P3.
<b>Immunogen</b>	PPP1R2P3 (AAH66922, 1 a.a. ~ 205 a.a) full-length recombinant protein with GST tag. MW of the GST tag alone is 26 KDa.
<b>Sequence</b>	MAASTASHRPIKILKNTSTTSSMVASAEQPRRSVDEELSKKSQKWDEINILATYHPADKGYGLM KIDEPSPPYHSMGDDDEDACRDTETTEAMAPGILAKKLAAAEGLEPKYRIQEQESSGEEDSDLS PEEREKKRQFEMRRKLHYNEGLNIKLARQLISKDLHDDDEDEEMLETADGESMNTEESNQGSTP SDQQQNKLRSS
<b>Host</b>	Mouse
<b>Reactivity</b>	Human
<b>Isotype</b>	IgG1 Kappa
<b>Quality Control Testing</b>	Antibody Reactive Against Recombinant Protein. Western Blot detection against Immunogen (48.29 KDa) .
<b>Storage Buffer</b>	In 1x PBS, pH 7.4
<b>Storage Instruction</b>	Store at -20°C or lower. Aliquot to avoid repeated freezing and thawing.

## Applications

- Western Blot (Transfected lysate)

Western Blot analysis of PPP1R2P3 expression in transfected 293T cell line by PPP1R2P3 monoclonal antibody (M01), clone 2G11.

Lane 1: PPP1R2P3 transfected lysate(23 KDa).

Lane 2: Non-transfected lysate.

[Protocol Download](#)

- Western Blot (Recombinant protein)

[Protocol Download](#)

- Immunohistochemistry (Formalin/PFA-fixed paraffin-embedded sections)

Immunoperoxidase of monoclonal antibody to PPP1R2P3 on formalin-fixed paraffin-embedded human testis. [antibody concentration 3 ug/ml]

[Protocol Download](#)

- Sandwich ELISA (Recombinant protein)

Detection limit for recombinant GST tagged PPP1R2P3 is 0.3 ng/ml as a capture antibody.

[Protocol Download](#)

- ELISA

## Gene Info — PPP1R2P3

Entrez GeneID	<a href="#">153743</a>
---------------	------------------------

GeneBank Accession#	<a href="#">BC066922</a>
---------------------	--------------------------

Protein Accession#	<a href="#">AAH66922</a>
--------------------	--------------------------

Gene Name	PPP1R2P3
-----------	----------

Gene Alias	MGC87149
------------	----------

Gene Description	protein phosphatase 1, regulatory (inhibitor) subunit 2 pseudogene 3
------------------	--

Gene Ontology	<a href="#">Hyperlink</a>
---------------	---------------------------

Gene Summary	O
--------------	---

Other Designations	-
--------------------	---