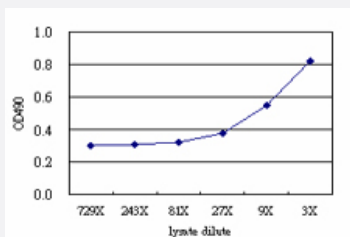


SGOL1 (Human) Matched Antibody Pair

Catalog # H00151648-AP51

Size 1 Set

Applications



Sandwich ELISA detection sensitivity ranging from approximately 27x to 3x dilution of the SGOL1 293T overexpression lysate (non-denatured).

Specification

Product Description

This antibody pair set comes with a matched antibody pair to detect and quantify the protein level of human SGOL1.

Reactivity

Human

Quality Control Testing

Standard curve using SGOL1 293T overexpression lysate (non-denatured) as an analyte. Sandwich ELISA detection sensitivity ranging from approximately 27x to 3x dilution of the SGOL1 293T overexpression lysate (non-denatured).

Supplied Product

Antibody pair set content:
 1. Capture antibody: mouse monoclonal anti-SGOL1 (100 ug)
 2. Detection antibody: rabbit purified polyclonal anti-SGOL1 (50 ug)
 *Reagents are sufficient for at least 3-5 x 96 well plates using recommended protocols.

Storage Instruction

Store reagents of the antibody pair set at -20°C or lower. Please aliquot to avoid repeated freeze thaw cycle. Reagents should be returned to -20°C storage immediately after use.

Applications

- ELISA Pair (Transfected lysate)

[Protocol Download](#)

Gene Info — SGOL1

Entrez GeneID	151648
Gene Name	SGOL1
Gene Alias	NY-BR-85, SGO, Sgo1
Gene Description	shugoshin-like 1 (S. pombe)
Omim ID	609168
Gene Ontology	Hyperlink
Other Designations	shugoshin 1AB protein shugoshin 1CD protein shugoshin 1EF protein shugoshin 1GH protein shugoshin 1KL protein shugoshin-like 1

Disease

- [Tobacco Use Disorder](#)