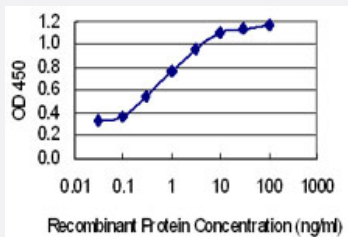


FBXO41 monoclonal antibody (M02), clone 6B6

Catalog # H00150726-M02

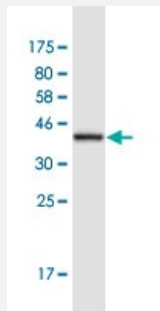
Size 100 ug

Applications



Sandwich ELISA (Recombinant protein)

Detection limit for recombinant GST tagged FBXO41 is 0.03 ng/ml as a capture antibody.



Western Blot detection against Immunogen (36.63 KDa) .

Specification

Product Description

Mouse monoclonal antibody raised against a partial recombinant FBXO41.

Immunogen

FBXO41 (XP_377742.2, 400 a.a. ~ 498 a.a) partial recombinant protein with GST tag. MW of the GST tag alone is 26 KDa.

Sequence

DHVSEITQEVA AEVCREGLKGLEMLVLTATPVTPKALLHFNSICRNLSMVQIGIADYFKEPSSPE
AQKLFEDMVTKLQALRRRPGFSKILHIKVEGG

Host

Mouse

Reactivity

Human

Isotype

IgG2a Kappa

Quality Control Testing

Antibody Reactive Against Recombinant Protein.
Western Blot detection against Immunogen (36.63 KDa) .

Storage Buffer

In 1x PBS, pH 7.4

Storage Instruction

Store at -20°C or lower. Aliquot to avoid repeated freezing and thawing.

Applications

- Western Blot (Recombinant protein)

[Protocol Download](#)

- Sandwich ELISA (Recombinant protein)

Detection limit for recombinant GST tagged FBXO41 is 0.03 ng/ml as a capture antibody.

[Protocol Download](#)

- ELISA

Gene Info — FBXO41

Entrez GeneID

[150726](#)

GeneBank Accession#

[XM_377742](#)

Protein Accession#

[XP_377742.2](#)

Gene Name

FBXO41

Gene Alias

FLJ37709, Fbx41

Gene Description

F-box protein 41

Omim ID

[609108](#)

Gene Ontology

[Hyperlink](#)

Gene Summary

Members of the F-box protein family, such as FBXO41, are characterized by an approximately 40 -amino acid F-box motif. SCF complexes, formed by SKP1 (MIM 601434), cullin (see CUL1; MIM 603134), and F-box proteins, act as protein-ubiquitin ligases. F-box proteins interact with SKP1 through the F box, and they interact with ubiquitination targets through other protein interaction domains (Jin et al., 2004 [PubMed 15520277]).[supplied by OMIM]

Other Designations

-