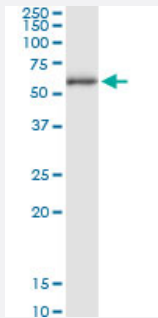


# CCT8L2 (Human) IP-WB Antibody Pair

Catalog # H00150160-PW1

Size 1 Set

## Applications



Immunoprecipitation of CCT8L2 transfected lysate using rabbit polyclonal anti-CCT8L2 and Protein A Magnetic Bead ([U0007](#)), and immunoblotted with mouse purified polyclonal anti-CCT8L2.

## Specification

<b>Product Description</b>	This IP-WB antibody pair set comes with one antibody for immunoprecipitation and another to detect the precipitated protein in western blot.
<b>Reactivity</b>	Human
<b>Quality Control Testing</b>	Immunoprecipitation-Western Blot (IP-WB) Immunoprecipitation of CCT8L2 transfected lysate using rabbit polyclonal anti-CCT8L2 and Protein A Magnetic Bead ( <a href="#">U0007</a> ), and immunoblotted with mouse purified polyclonal anti-CCT8L2.
<b>Supplied Product</b>	Antibody pair set content: 1. Antibody pair for IP: rabbit polyclonal anti-CCT8L2 (300 ul) 2. Antibody pair for WB: mouse purified polyclonal anti-CCT8L2 (50 ug)
<b>Storage Instruction</b>	Store reagents of the antibody pair set at -20°C or lower. Please aliquot to avoid repeated freeze thaw cycle. Reagents should be returned to -20°C storage immediately after use.

## Applications

- Immunoprecipitation-Western Blot

[Protocol Download](#)

## Gene Info — CCT8L2

**Entrez GeneID** [150160](#)**Gene Name** CCT8L2**Gene Alias** CESK1, MGC118839, MGC118840**Gene Description** chaperonin containing TCP1, subunit 8 (theta)-like 2**Gene Ontology** [Hyperlink](#)**Gene Summary** O**Other Designations** OTTHUMP00000180627|T-complex protein 1