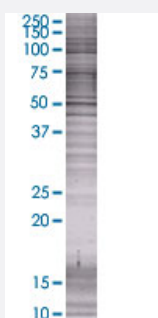


WFDC5 293T Cell Transient Overexpression Lysate(Denatured)

Catalog # H00149708-T01

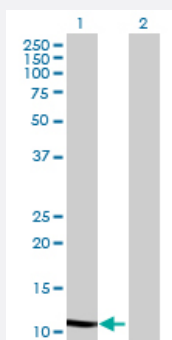
Size 100 uL

Applications



SDS-PAGE Gel

WFDC5 transfected lysate.



Western Blot

Lane 1: WFDC5 transfected lysate (13.64 KDa)

Lane 2: Non-transfected lysate.

Specification

Transfected Cell Line 293T

Plasmid pCMV-WFDC5 full-length

Host Human

Theoretical MW (kDa) 13.64

Quality Control Testing Transient overexpression cell lysate was tested with Anti-WFDC5 antibody ([H00149708-B01](#)) by Western Blots.
SDS-PAGE Gel
WFDC5 transfected lysate.
Western Blot
Lane 1: WFDC5 transfected lysate (13.64 KDa)
Lane 2: Non-transfected lysate.

Storage Buffer

1X Sample Buffer (50 mM Tris-HCl, 2% SDS, 10% glycerol, 300 mM 2-mercaptoethanol, 0.01% Bromophenol blue)

Storage Instruction

Store at -80°C. Aliquot to avoid repeated freezing and thawing.

Applications

- Western Blot

Gene Info — WFDC5

Entrez GeneID[149708](#)**GeneBank Accession#**[NM_145652.2](#)**Protein Accession#**[NP_663627.1](#)**Gene Name**

WFDC5

Gene Alias

PRG5, WAP1, dJ211D12.5

Gene Description

WAP four-disulfide core domain 5

Omim ID[605161](#)**Gene Ontology**[Hyperlink](#)**Gene Summary**

This gene encodes a member of the WAP-type four-disulfide core (WFDC) domain family. Most WFDC proteins contain only one WFDC domain, and this encoded protein contains two WFDC domains. The WFDC domain, or WAP signature motif, contains eight cysteines forming four disulfide bonds at the core of the protein, and functions as a protease inhibitor. Most WFDC gene members are localized to chromosome 20q12-q13 in two clusters: centromeric and telomeric. This gene belongs to the centromeric cluster. [provided by RefSeq]

Other Designations

OTTHUMP00000043834|p53-responsive gene 5|protease inhibitor WAP1