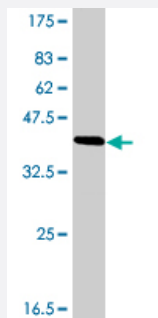


CLDN19 polyclonal antibody (A01)

Catalog # H00149461-A01

Size 50 uL

Applications



Western Blot detection against Immunogen (48.95 KDa) .

Specification

Product Description	Mouse polyclonal antibody raised against a full-length recombinant CLDN19.
Immunogen	CLDN19 (AAH30524, 1 a.a. ~ 211 a.a) full-length recombinant protein with GST tag.
Sequence	MANSGQLQLLGYFLALGGWVGIIASTALPQWKQSSYAGDAITAVGLYEGLWMSCASQSTGQVQCK LYDSLLALDGHISARALMVVAVLLGFVAMVLSVVGMMKCTRVGDSNPIAKGRVAIAGGALFILAGL CTLTAWSYATLVTQEFFNPSTPVNARYEFGPALFVGWASAGLAVLGGFLCCTCPEPERPNSS PQPYPGPSSAAAREYV
Host	Mouse
Reactivity	Human
Quality Control Testing	Antibody Reactive Against Recombinant Protein. Western Blot detection against Immunogen (48.95 KDa) .
Storage Buffer	50 % glycerol
Storage Instruction	Store at -20°C or lower. Aliquot to avoid repeated freezing and thawing.

Applications

- Western Blot (Recombinant protein)

[Protocol Download](#)

- ELISA

Gene Info — CLDN19

Entrez GeneID [149461](#)

GeneBank Accession# [BC030524](#)

Protein Accession# [AAH30524](#)

Gene Name CLDN19

Gene Alias -

Gene Description claudin 19

Omim ID [248190 610036](#)

Gene Ontology [Hyperlink](#)

Gene Summary The product of this gene belongs to the claudin family. It plays a major role in tight junction-specific obliteration of the intercellular space, through calcium-independent cell-adhesion activity. Defects in this gene are the cause of hypomagnesemia renal with ocular involvement (HOMGO). HOMGO is a progressive renal disease characterized by primary renal magnesium wasting with hypomagnesemia, hypercalciuria and nephrocalcinosis associated with severe ocular abnormalities such as bilateral chorioretinal scars, macular colobomata, significant myopia and nystagmus. Two transcript variants encoding distinct isoforms have been identified for this gene. [provided by RefSeq]

Other Designations OTTHUMP00000008733

Pathway

- [Cell adhesion molecules \(CAMs\)](#)
- [Leukocyte transendothelial migration](#)
- [Tight junction](#)