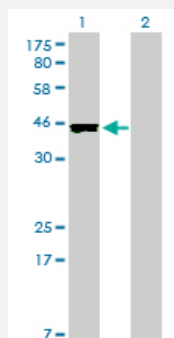


CREB3L4 monoclonal antibody (M01), clone 3E3

Catalog # H00148327-M01

Size 100 ug

Applications

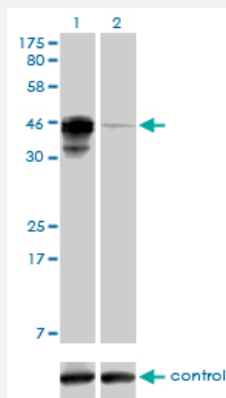


Western Blot (Transfected lysate)

Western Blot analysis of CREB3L4 expression in transfected 293T cell line by CREB3L4 monoclonal antibody (M01), clone 3E3.

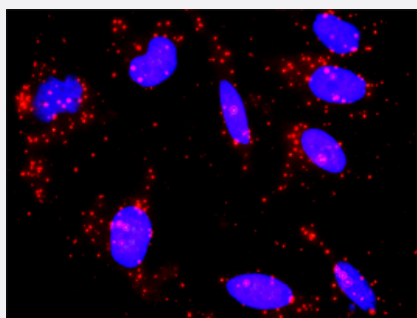
Lane 1: CREB3L4 transfected lysate(43.4 KDa).

Lane 2: Non-transfected lysate.



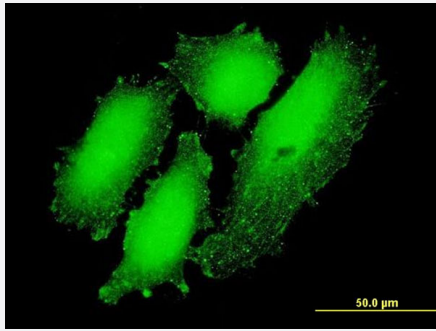
RNAi Knockdown (Antibody validated)

Western blot analysis of CREB3L4 over-expressed 293 cell line, cotransfected with CREB3L4 Validated Chimera RNAi (Cat # H00148327-R01V) (Lane 2) or non-transfected control (Lane 1). Blot probed with CREB3L4 monoclonal antibody (M01), clone 3E3 (Cat # H00148327-M01). GAPDH (36.1 kDa) used as specificity and loading control.



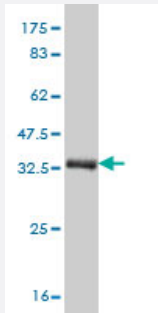
In situ Proximity Ligation Assay (Cell)

Proximity Ligation Analysis of protein-protein interactions between CREB3 and CREB3L4. HeLa cells were stained with anti-CREB3 rabbit purified polyclonal 1:1200 and anti-CREB3L4 mouse monoclonal antibody 1:50. Each red dot represents the detection of protein-protein interaction complex, and nuclei were counterstained with DAPI (blue).



Immunofluorescence

Immunofluorescence of monoclonal antibody to CREB3L4 on HeLa cell .
[antibody concentration 10 ug/ml]



Western Blot detection against Immunogen (37.84 KDa) .

Specification

Product Description	Mouse monoclonal antibody raised against a partial recombinant CREB3L4.
Immunogen	CREB3L4 (NP_570968, 1 a.a. ~ 110 a.a) partial recombinant protein with GST tag. MW of the GST tag alone is 26 KDa.
Sequence	MDLGIPDLLDAWLEPPEDIFSTGSLVLELGLHCPPPEVPVTRLQEQGLQGWSGGDRGCGLQES EPEDFLKLFIDPNEVYCSEASPGSDSGISEDPCHPDSPAPRATSSP
Host	Mouse
Reactivity	Human
Isotype	IgG2a Kappa
Quality Control Testing	Antibody Reactive Against Recombinant Protein. Western Blot detection against Immunogen (37.84 KDa) .
Storage Buffer	In 1x PBS, pH 7.4
Storage Instruction	Store at -20°C or lower. Aliquot to avoid repeated freezing and thawing.

Applications

- Western Blot (Transfected lysate)

Western Blot analysis of CREB3L4 expression in transfected 293T cell line by CREB3L4 monoclonal antibody (M01), clone 3E3.

Lane 1: CREB3L4 transfected lysate(43.4 KDa).

Lane 2: Non-transfected lysate.

[Protocol Download](#)

- Western Blot (Recombinant protein)

[Protocol Download](#)

- ELISA

- RNAi Knockdown (Antibody validated)

Western blot analysis of CREB3L4 over-expressed 293 cell line, cotransfected with CREB3L4 Validated Chimera RNAi (Cat # H00148327-R01V) (Lane 2) or non-transfected control (Lane 1). Blot probed with CREB3L4 monoclonal antibody (M01), clone 3E3 (Cat # H00148327-M01). GAPDH (36.1 kDa) used as specificity and loading control.

[Protocol Download](#)

- In situ* Proximity Ligation Assay (Cell)

Proximity Ligation Analysis of protein-protein interactions between CREB3 and CREB3L4. HeLa cells were stained with anti-CREB3 rabbit purified polyclonal 1:1200 and anti-CREB3L4 mouse monoclonal antibody 1:50. Each red dot represents the detection of protein-protein interaction complex, and nuclei were counterstained with DAPI (blue).

- Immunofluorescence

Immunofluorescence of monoclonal antibody to CREB3L4 on HeLa cell . [antibody concentration 10 ug/ml]

Gene Info — CREB3L4

Entrez GeneID [148327](#)

GeneBank Accession# [NM_130898](#)

Protein Accession# [NP_570968](#)

Gene Name CREB3L4

Gene Alias AIBZIP, ATCE1, CREB3, CREB4, JAL, hJAL

Gene Description cAMP responsive element binding protein 3-like 4

Omim ID [607138](#)

Gene Ontology[Hyperlink](#)**Gene Summary**

cAMP response element-binding (CREB) proteins are a family of mammalian transcription activators. For further background information on CREB proteins, see CREB1 (MIM 123810).[supplied by OMIM]

Other Designations

OTTHUMP00000035264|OTTHUMP00000035265|OTTHUMP00000035266|androgen-induced basic leucine zipper|cAMP responsive element binding protein 1

Pathway

- [Melanogenesis](#)
- [Prostate cancer](#)