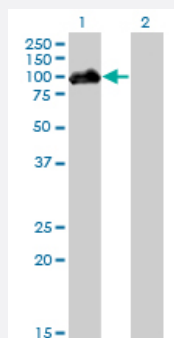


# HIPK4 monoclonal antibody (M01), clone 2E8

Catalog # H00147746-M01

Size 100 ug

## Applications

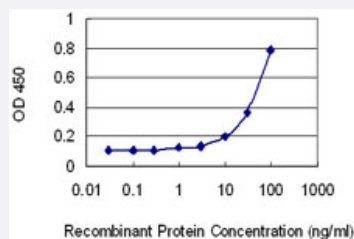


### Western Blot (Transfected lysate)

Western Blot analysis of HIPK4 expression in transfected 293T cell line by HIPK4 monoclonal antibody (M01), clone 2E8.

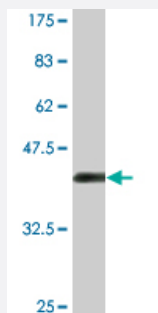
Lane 1: HIPK4 transfected lysate (69.4 kDa).

Lane 2: Non-transfected lysate.



### Sandwich ELISA (Recombinant protein)

Detection limit for recombinant GST tagged HIPK4 is 3 ng/ml as a capture antibody.



Western Blot detection against Immunogen (36.52 kDa).

## Specification

### Product Description

Mouse monoclonal antibody raised against a partial recombinant HIPK4.

Immunogen	HIPK4 (AAH34501.1, 519 a.a. ~ 616 a.a) partial recombinant protein with GST tag. MW of the GST tag alone is 26 KDa.
Sequence	RGSSWEEGEHLGASAEPLAILQRDEDGPNIDNMTMEAERPDPPELFDPPSSCPGEWLSEPDCTLE SVRGPRAGQLPPRRSHQHGPARGATSFLQHVTHH
Host	Mouse
Reactivity	Human
Isotype	IgG2a Kappa
Quality Control Testing	Antibody Reactive Against Recombinant Protein. Western Blot detection against Immunogen (36.52 KDa) .
Storage Buffer	In 1x PBS, pH 7.4
Storage Instruction	Store at -20°C or lower. Aliquot to avoid repeated freezing and thawing.

## Applications

- Western Blot (Transfected lysate)

Western Blot analysis of HIPK4 expression in transfected 293T cell line by HIPK4 monoclonal antibody (M01), clone 2E8.

Lane 1: HIPK4 transfected lysate(69.4 KDa).

Lane 2: Non-transfected lysate.

[Protocol Download](#)

- Western Blot (Recombinant protein)

[Protocol Download](#)

- Sandwich ELISA (Recombinant protein)

Detection limit for recombinant GST tagged HIPK4 is 3 ng/ml as a capture antibody.

[Protocol Download](#)

- ELISA

## Gene Info — HIPK4

Entrez GeneID [147746](#)

GeneBank Accession# [BC034501](#)

Protein Accession#	<a href="#">AAH34501.1</a>
Gene Name	HIPK4
Gene Alias	FLJ32818
Gene Description	homeodomain interacting protein kinase 4
Gene Ontology	<a href="#">Hyperlink</a>
Other Designations	-

## Disease

- [Kidney Failure](#)