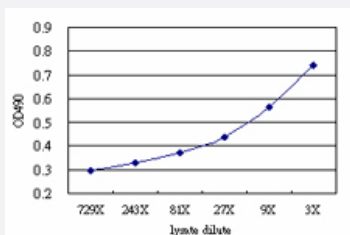


HIPK4 (Human) Matched Antibody Pair

Catalog # H00147746-AP51

Size 1 Set

Applications



Sandwich ELISA detection sensitivity ranging from approximately 27x to 3x dilution of the HIPK4 293T overexpression lysate (non-denatured).

Specification

Product Description

This antibody pair set comes with a matched antibody pair to detect and quantify the protein level of human HIPK4.

Reactivity

Human

Quality Control Testing

Standard curve using HIPK4 293T overexpression lysate (non-denatured) as an analyte. Sandwich ELISA detection sensitivity ranging from approximately 27x to 3x dilution of the HIPK4 293T overexpression lysate (non-denatured).

Supplied Product

Antibody pair set content:
 1. Capture antibody: mouse monoclonal anti-HIPK4 (100 ug)
 2. Detection antibody: rabbit purified polyclonal anti-HIPK4 (50 ug)
 *Reagents are sufficient for at least 3-5 x 96 well plates using recommended protocols.

Storage Instruction

Store reagents of the antibody pair set at -20°C or lower. Please aliquot to avoid repeated freeze thaw cycle. Reagents should be returned to -20°C storage immediately after use.

Applications

- ELISA Pair (Transfected lysate)

[Protocol Download](#)

Gene Info — HIPK4

Entrez GeneID [147746](#)

Gene Name HIPK4

Gene Alias FLJ32818

Gene Description homeodomain interacting protein kinase 4

Gene Ontology [Hyperlink](#)

Other Designations -

Disease

- [Kidney Failure](#)