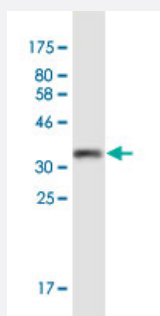


PIK3R6 monoclonal antibody (M02), clone 2F18

Catalog # H00146850-M02

Size 100 ug

Applications



Western Blot detection against Immunogen (36.08 KDa) .

Specification

Product Description	Mouse monoclonal antibody raised against a partial recombinant PIK3R6.
Immunogen	PIK3R6 (NP_001010855, 661 a.a. ~ 754 a.a) partial recombinant protein with GST tag. MW of the GST tag alone is 26 KDa.
Sequence	GKSFSTVTNTFRTNNIQISRDQRLTLSLDKDDQRTFRDVVRFEVAPCPEPCSGAQKSKAPWLN LHGQQEVEAIKAKPKPLLMPINTFSGIVQ
Host	Mouse
Reactivity	Human
Isotype	IgG2a Kappa
Quality Control Testing	Antibody Reactive Against Recombinant Protein. Western Blot detection against Immunogen (36.08 KDa) .
Storage Buffer	In 1x PBS, pH 7.4
Storage Instruction	Store at -20°C or lower. Aliquot to avoid repeated freezing and thawing.

Applications

- Western Blot (Recombinant protein)

[Protocol Download](#)

- ELISA

Gene Info — PIK3R6

Entrez GeneID [146850](#)

GeneBank Accession# [NM_001010855](#)

Protein Accession# [NP_001010855](#)

Gene Name PIK3R6

Gene Alias C17orf38, DKFZp666P158, FLJ34500, HsT41028, p84, p87(PIKAP), p87PIKAP

Gene Description phosphoinositide-3-kinase, regulatory subunit 6

Omim ID [611462](#)

Gene Ontology [Hyperlink](#)

Gene Summary Phosphoinositide 3-kinase gamma is a lipid kinase that produces the lipid second messenger phosphatidylinositol 3,4,5-trisphosphate. The kinase is composed of a catalytic subunit and one of several regulatory subunits, and is chiefly activated by G protein-coupled receptors. This gene encodes a regulatory subunit, and is distantly related to the phosphoinositide-3-kinase, regulatory subunit 5 gene which is located adjacent to this gene on chromosome 7. The orthologous protein in the mouse binds to both the catalytic subunit and to G(beta/gamma), and mediates activation of the kinase subunit downstream of G protein-coupled receptors. [provided by RefSeq]

Other Designations PI3Kgamma adapter protein of 87 kDa p87 phosphoinositide 3-kinase gamma (PI3Kg) adapter protein