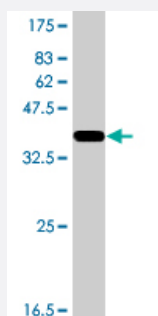


# C17orf38 polyclonal antibody (A01)

Catalog # H00146850-A01

Size 50 uL

## Applications



Western Blot detection against Immunogen (36.08 KDa) .

## Specification

<b>Product Description</b>	Mouse polyclonal antibody raised against a partial recombinant C17orf38.
<b>Immunogen</b>	C17orf38 (NP_001010855, 661 a.a. ~ 754 a.a) partial recombinant protein with GST tag.
<b>Sequence</b>	GKSFSTVTNTFRTNNIQSRDQRLTLSLDKDDQRTFRDVVRFEVAPCPEPCSGAQKSKAPWLN LHGQQEVEAIKAKPKPLLMPINTFSGIVQ
<b>Host</b>	Mouse
<b>Reactivity</b>	Human
<b>Quality Control Testing</b>	Antibody Reactive Against Recombinant Protein. Western Blot detection against Immunogen (36.08 KDa) .
<b>Storage Buffer</b>	50 % glycerol
<b>Storage Instruction</b>	Store at -20°C or lower. Aliquot to avoid repeated freezing and thawing.

## Applications

- Western Blot (Recombinant protein)

[Protocol Download](#)

- ELISA

## Gene Info — PIK3R6

**Entrez GeneID** [146850](#)

**GeneBank Accession#** [NM\\_001010855](#)

**Protein Accession#** [NP\\_001010855](#)

**Gene Name** PIK3R6

**Gene Alias** C17orf38, DKFZp666P158, FLJ34500, HsT41028, p84, p87(PIKAP), p87PIKAP

**Gene Description** phosphoinositide-3-kinase, regulatory subunit 6

**Omim ID** [611462](#)

**Gene Ontology** [Hyperlink](#)

**Gene Summary** Phosphoinositide 3-kinase gamma is a lipid kinase that produces the lipid second messenger phosphatidylinositol 3,4,5-trisphosphate. The kinase is composed of a catalytic subunit and one of several regulatory subunits, and is chiefly activated by G protein-coupled receptors. This gene encodes a regulatory subunit, and is distantly related to the phosphoinositide-3-kinase, regulatory subunit 5 gene which is located adjacent to this gene on chromosome 7. The orthologous protein in the mouse binds to both the catalytic subunit and to G(beta/gamma), and mediates activation of the kinase subunit downstream of G protein-coupled receptors. [provided by RefSeq]

**Other Designations** PI3Kgamma adapter protein of 87 kDa|p87 phosphoinositide 3-kinase gamma (PI3Kg) adapter protein